



**Salford CVS**  
Making a difference in Salford

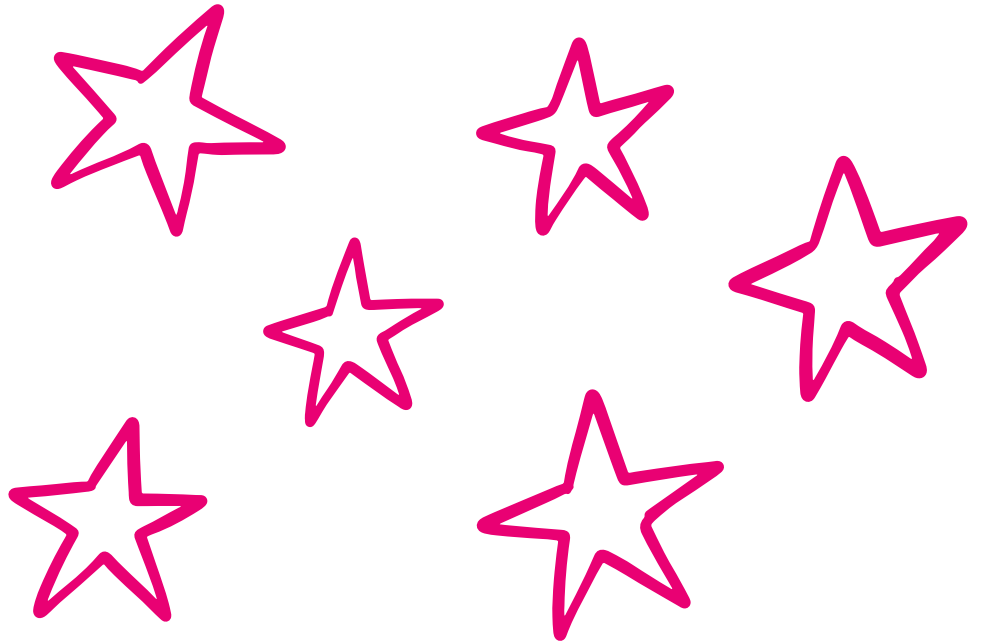
# Elevate Salford

## **Social Research Project - Elevate Salford**

**Evaluating the long-term impact  
and benefit of the Elevate Salford  
programme's current model**

# Table of Contents

Programme overview	<b>2</b>
Brief	<b>3</b>
Scope of work	<b>4</b>





# Programme overview

The Elevate Salford programme provides a range of services to support, train and prepare people furthest from the labour market, to gain skills, training and employment via the strong charity sector in Salford. The programme is funded by the Albert Gubay Charitable Foundation Trust (AGCF) with an additional AGCF grant, Salford City Council is funding the coordination of the programme by **Salford CVS**.



The programme aligns with Salford City Council's wider approach to education, training and employment.

Delivery of the programme is undertaken by five 'core' charity partners: **Groundwork Greater Manchester, Mustard Tree, Salford Foundation, Salford Loaves & Fishes and The Broughton Trust**. Their work is also augmented by the spot-purchase of specialist provision and grant funding for charities and VCSE organisations that deliver in support of this programme.

The programme supports individuals who live in Salford and are within at least one of the '**Nine priority groups**':

- ★ Care Leavers
- ★ Carers
- ★ Ex-offenders, offenders and their families
- ★ Homeless people
- ★ People with physical and / or learning disabilities
- ★ People recovering from substance misuse
- ★ Victims of domestic abuse
- ★ Victims of modern slavery, including refugees
- ★ Other vulnerable people \*



# Brief:

Elevate Salford is seeking a **skilled and experienced research organisation** to undertake a piece of social research to evaluate the long-term impact of the Elevate Salford Programme on participants supported into employment over the last three years. This research will provide critical insights into the effectiveness of our bespoke, individualised approach and its ability to deliver sustainable employment and improved wellbeing for individuals furthest from the job market.



## Background

Since its inception in 2022, the Elevate Salford Programme has focused on supporting individuals furthest from the labour market by:

- ★ Committing long-term time, support and resources to learning and skills development
- ★ Access to accredited and non-accredited training
- ★ Addressing wider holistic needs
- ★ Building the confidence, skills, and abilities necessary to overcome barriers to secure employment

The programme aims to secure long-term, sustainable employment for its participants while also improving their overall wellbeing and prospects. Elevate Salford is now seeking to evidence the impact of its model to guide future investment and programme delivery.

## Objectives of the research

The primary objectives of this research are to:

- 1 **Capture why the Elevate Salford model works**, with a focus on its bespoke and individualised approach
- 2 **Understand the long-term benefits of the programme**, including its impact on:
  - ★ Sustainable employment outcomes.
  - ★ Improvement in participant confidence and wellbeing
- 3 **Provide qualitative and quantitative evidence** of how the programme creates lasting change for individuals and communities
- 4 **Identify key lessons learned** and recommendations for the future development of Elevate Salford

# Scope of work

The successful bidder will be required to:

## Engage with 25 Programme Participants (five from each Core partner)

- ★ **Conduct in-depth interviews** with 25 individuals who have been supported by the Elevate Salford Programme into employment over the last 2-3 years
- ★ **Explore participants' experiences** of the programme, including the support they received and its impact on their employment and wellbeing

## Analyse key themes

- ★ Examine why the **bespoke and individualised approach** works for those furthest from the job market
- ★ **Assess the role of holistic support** in addressing barriers to employment and promoting sustainable outcomes

## Capture long-term benefits

- Evaluate the **sustainability** of participants' employment
- Investigate improvements in participants' confidence, skills, and overall prospects

## Produce a final report

- ★ **Provide a comprehensive report** summarising findings, with qualitative and quantitative data
- ★ **Include case studies**, key themes, and recommendations for future delivery

## Deliverables

The successful bidder will provide:

- 1 A detailed project plan outlining methodology, timelines, and milestones
- 2 A mid-point progress update
- 3 A final report including:
  - Executive summary.
  - Findings from participant interviews.
  - Evidence of long-term impacts on employment and wellbeing.
  - Recommendations for the future development of the Elevate Salford Programme.
- 4 A presentation of findings



## Methodology

Applicants should propose an appropriate research methodology, which may include:

- **Semi-structured interviews** or focus groups with participants.
- **Quantitative analysis** of outcomes where applicable.
- **Case study development** to provide in-depth insights.

## Eligibility and experience

The successful bidder will provide:

- 1 Proven experience in conducting social research, particularly within employment, skills, or wellbeing contexts
- 2 Strong qualitative and quantitative research skills
- 3 Ability to engage sensitively with participants from diverse backgrounds
- 4 Expertise in producing high-quality, evidence-based reports

## Budget and timeline

- Budget: Proposals should include a detailed breakdown of costs, including fees and expenses, **within a maximum budget of £15,000**
- Timeline: The project must be completed **within 12 weeks** from the start date.

## Submission requirements

Interested organisations are invited to submit a proposal including:

- 1 A detailed methodology and approach
- 2 Relevant experience and examples of previous research
- 3 Key personnel involved in the project
- 4 Proposed timeline and milestones
- 5 Budget breakdown



5



**Elevate**  
**Salford**

VCSE Learning,  
Skills and Work  
Programme

## Evaluation criteria

Proposals will be evaluated based on:

- 1 Methodology and approach (40%)
- 2 Relevant experience and expertise (30%)
- 3 Value for money (20%)
- 4 Alignment with the objectives and deliverables (10%)



### Submission deadline

All proposals must be submitted by 31st March 2025  
to [sandrine.beunol@salfordcvs.co.uk](mailto:sandrine.beunol@salfordcvs.co.uk)



### Contact information

For further information or questions regarding this tender, please contact: **Sandrine Beaunol, Elevate Salford Programme Manager at Salford Community and Voluntary Services (CVS)**

**This research project represents a key opportunity to capture the impact of Elevate Salford's work and to inform the strategic direction of future programme delivery. We look forward to receiving your proposal.**



**Elevate Salford** | VCSE Learning, Skills and Work Programme

*"The programme has opened opportunities for me that I never would have imagined. It's given me a lot of confidence, so I now feel excited for the future."*

Lee