

Memorandum of Understanding Between

The Voluntary, Community and Social Enterprise (VCSE) Sector in Salford and the partner organisations in Salford Together.

This MOU gives the VCSE sector an equitable role in Salford Together; as a key strategic partner in health, social care and wellbeing activities which will achieve the outcomes described in Salford's Locality Plan.

We already have a **joint commitment** in our Locality Plan for:

- **An Inclusive Approach:** including all partners in decision-making at the initial stages of strategic planning and the development of new models of service delivery.
- **Development of Alliances:** within and across sectors, thematic, as well as population and place-based, dependent on the issues presented and the solutions required.
- **Recognition of Community and Individual Assets:** Individuals' and communities' assets are vital to improving Salford resident's health outcomes

And the partners to this MOU share an **ambition:**

- Provide the best possible services and support for the people of Salford
- Co-design these services
- Maximise the talent, reach and social value of VCSE sector activity for the benefit of the people of Salford

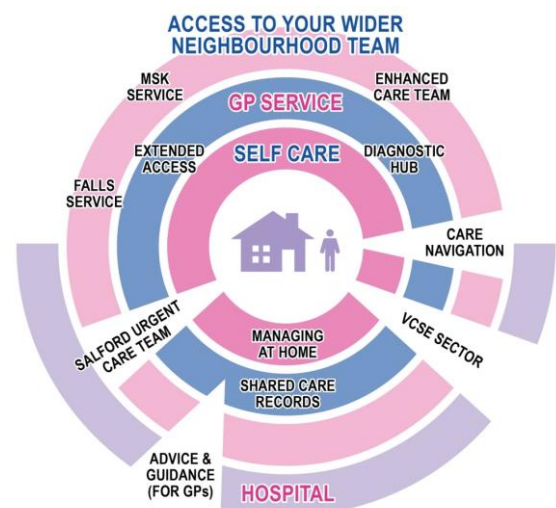
As partners, we are committed to the following **principles** which underpin the delivery of our work together:

- Prevention, early help and intervention
- Person-centred
- Co-creating
- Doing with, not for
- Asset based approaches to supporting people
- Self-care
- Promoting independence
- Just enough support when needed

To deliver this MOU, we will use the VCSE sector's strengths, including community embedded and personalised approaches, and its diversity, flexibility and ability to innovate. We have agreed a new way of working together and have jointly developed an action plan which **aims** to achieve:

- A clear **position and role** for the VCSE sector in the Salford Together health and social care system
- A **consistent approach** to involvement of the VCSE sector in strategic and operational thinking
- **Recognition** and agreement about how the sector creates happy, healthy places for people to live in, supports and benefits local people, delivers services, and influences policy and strategy
- Consistency of practice and **high standards** in maintaining relationships, and in VCSE activities
- **Shared understanding** of the **relationship and connections** that the VCSE sector has with Salford's diverse communities
- **Resources** for VCSE activity that are appropriate, accessible, and sustainable in the longer term
- Effective **collaboration, co-production and co-design** with local people
- Valuing the contribution of **voluntary activity** and providing the necessary support and resources

We want to achieve a continuum in care and support which spans the public and VCSE sectors and includes commissioned and non-commissioned services.



To achieve these ambitions, the partners to this MOU have agreed the following **commitments for action**:

INVOLVE

- There will be VCSE representation in decision-making bodies across Salford Together, and wider engagement and involvement of VCSE in partnership activity
- Public sector partners will be directly and regularly involved in supporting the VOCAL VCSE infrastructure

INCLUDE

- There will be effective community engagement which builds from sound communication between all strategic partners
- The lived experiences of people will be fed into public sector decision-making by the VCSE sector
- Shared and effective evaluation and monitoring of equalities characteristics will be put in place to ensure that beneficiaries from diverse backgrounds are supported appropriately

COLLABORATE

- The VCSE sector will be a key strategic partner in Salford Together and a key delivery partner of wellbeing, health and care services and interventions to the people of Salford
- Co-production of increasingly integrated services will reflect the need for preventative and holistic aspects of care, and consider psychological, physical and social factors in the development process
- Shared and agreed standards of quality will be put in place for pathways which include both public sector and VCSE activity

- Data and intelligence will be shared across the public, private and VCSE sector to design and target the available collective resources at those who need them the most
- We will explore collaborative approaches to procurement from VCSE providers which adopt the principles of 'one size doesn't fit all' and 'small is (sometimes) beautiful'

VALUE

- We acknowledge that volunteering brings health benefits, and will see that this is properly valued and resourced; and ensure that the opportunity to volunteer should be made available to the widest range of individuals and communities
- We share a commitment to commissioning for added Social Value to increase the spending power of local procurement

INVEST

- Our prevention and self-care principles will shift significant demand for health and care services from the health and social care sector to local communities, with the support of the voluntary, community and social enterprise sector.
- We will ensure that this shift in demand is supported by a shift in resources towards improving capacity and sustainability of key VCSE anchor organisations, and supporting volunteer-led groups to increase local participation and engagement
- We will adopt the principle outlined in our Locality Plan of 'Invest to Save'; investing in transformation and double-running needed to ensure that efficiencies are made across the system in years to come.

The **results** of this collaboration will be...

- Salford people living healthier lives
- Improved self-care and resilience in local communities
- Increased provision of community-based care and support
- Reduced reliance on primary and secondary care
- A more efficient, high quality and effective health and social care system

**SALFORD
TOGETHER**
HEALTH & SOCIAL CARE WORKING
WITH YOU AND YOUR COMMUNITY



**Start well.
Live well.
Age well.**
OUR SALFORD