



Salford CVS
making a difference in Salford

Salford VCSE Conference




5th July 2018

AJ Bell Stadium



***Making a difference in Salford
since 1973***

Registered office: The Old Town Hall, 5 Irwell Place, Eccles, Salford M30 0FN

 **0161 787 7795**  office@salfordcvs.co.uk  www.salfordcvs.co.uk

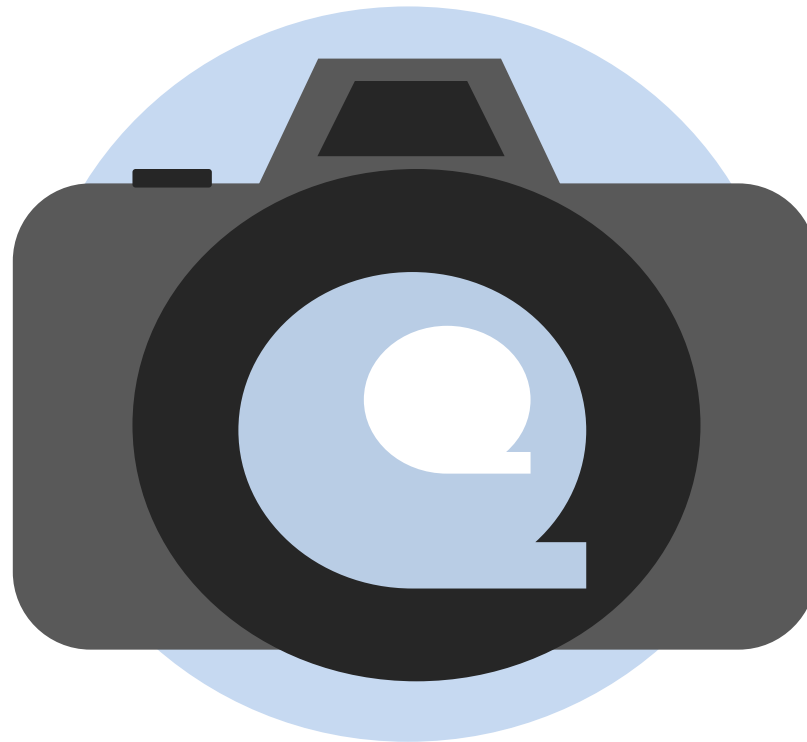
Company Limited by Guarantee: 1948293 Registered Charity: 519361





Salford CVS
making a difference in Salford

Short film



12 months in the VCSE sector in Salford
– a snapshot



Salford CVS
making a difference in Salford

Welcome address


Alison Page
Chief Executive
Salford CVS





Welcome & housekeeping



- Salford CVS staff in purple t-shirts - here to help!
- Twitter hashtag for the conference [#SalfordVCSE](#)
- [#LoveCharity](#) [#Grants4Good](#)
- Wi-Fi – ‘FreeBee’ no password
- Photography / Filming / Visual minutes
- Housekeeping - fire alarm / exits, mobile phones, loos, information desk, timekeeping, tea / coffee breaks, lunch, finish
- First Aid 
- Information packs – agenda, delegate list, workshop info, biographies, NHS70 message, VCSE Strategy, H&SC draft MoU, *10% Better* campaign pledge, Tackling Poverty pledges
- Evaluation forms / Equal Opportunities monitoring forms
- Volunteering Portal
- Views from the conference - POLLS



Salford CVS
making a difference in Salford

Tackling Poverty in Salford 2017

3 things I pledge to do to
help tackle poverty in Salford:

1.

2.

3.

Signed:

 Salford CVS
making a difference in Salford

What three things can you do?



Salford CVS
making a difference in Salford

Tackling Poverty in Salford 2018

**3 things I pledge to do in 2018
to help tackle poverty in Salford:**

1.

2.

3.

Full name:

 **Salford CVS**
making a difference in Salford

What did you do? 2018 pledges



Salford CVS
making a difference in Salford



Four Seasons: A Year in Salford **via my phone...**

Alison Page
Chief Executive
Salford CVS





Salford CVS
making a difference in Salford





Salford CVS
making a difference in Salford





Salford CVS
making a difference in Salford

10GM

10GM is a joint venture between:

- Action Together (Oldham and Tameside)
- Bolton CVS
- CVS Rochdale
- Macc
- Salford CVS
- VCA Trafford

10GM provides support to voluntary organisations, community groups and social enterprises across Greater Manchester.

We represent a combined membership of thousands of local voluntary, community and social enterprise organisations.

We aim to help the sector tackle poverty and inequality and demonstrate the positive impact of its activities on the lives of the citizens of Greater Manchester.

We believe that voluntary, community and social enterprise organisations have an important part to play in ensuring that devolution benefits everyone.

Contact 10GM
Email: info@10gm.org.uk for more information
@10GMpartners

GMCA

GM Priorities & Actions

GM Work & Skills Strategy put in place to address systematic issues, alongside wider Greater Manchester Strategy – encompassing all elements of public service reform and reinforcing the importance of integration and 'one approach' to education, work and skills

GMS Priorities	Work & Skills Strategy Priorities	Outcomes
Young people equipped for Life	1. Improving CEIAG to support informed decision making	All young people have the skills to succeed for life and work
Good jobs, with the opportunity to progress and develop	2. Reforming the system to focus on outcomes not outputs	Residents have the opportunity to progress to technical/higher level skills which employers need to compete globally
Healthy lives, with quality care for those that need it	3. Developing skills infrastructure to meet economic need	Residents will have integrated support to enter, sustain and progress in work
An age-friendly GM	4. Improving attainment from compulsory education	Employers will offer quality employment with clear career progression routes
	5. Strengthening employer engagement / involvement in skills	Improved outcomes for people with health needs, more people supported in staywork and live at home for as long as possible
	6. Growing the quality and quantity of Apprenticeships	More older people will secure and retain employment
	7. Developing and retaining higher level skills	
	8. Redesigning universal support provision	
	9. Developing specialist support for hard-to-reach groups	
	10. Ensuring commissioned programmes have a work & skills focus	





Salford CVS
making a difference in Salford





Salford CVS
making a difference in Salford



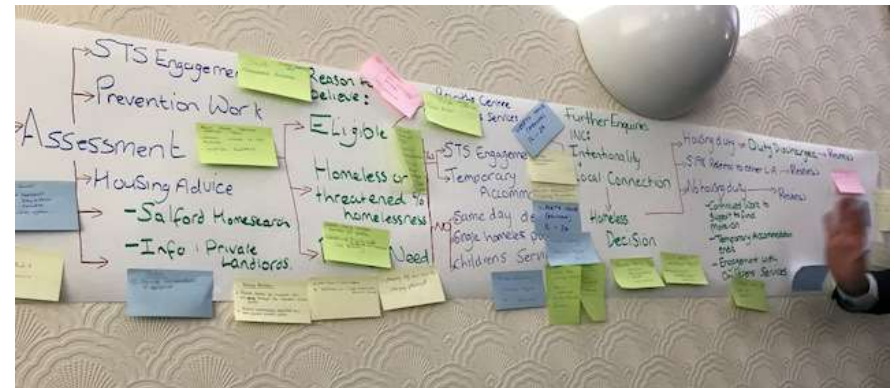


Salford CVS
making a difference in Salford





Salford CVS
making a difference in Salford





Salford CVS
making a difference in Salford



Salford Women's Centre
Promoting the wellbeing of women in Salford

International Women's Day

8 MARCH 2018
10AM-3PM



International Cuisine
Henna Painting
Info Stalls
Tunisian Crochet
Beauty
Health Improvement

SALFORD WOMEN'S CENTRE
HALTON BANK
SALFORD
M6 7AB





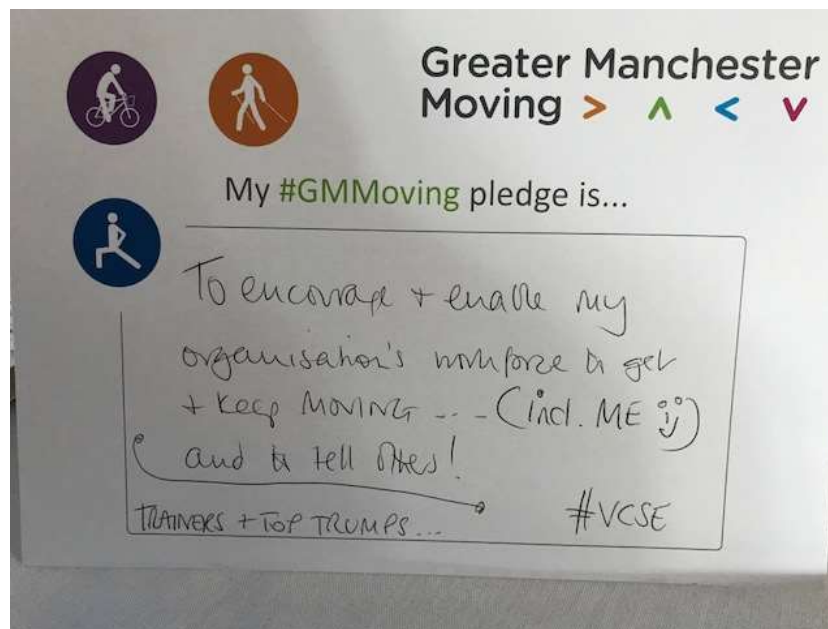
Salford CVS
making a difference in Salford


manchester together
22 May





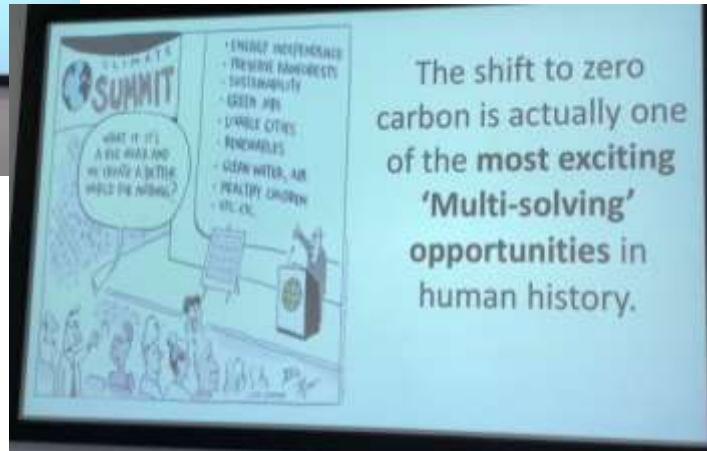
Salford CVS
making a difference in Salford





Salford CVS
making a difference in Salford





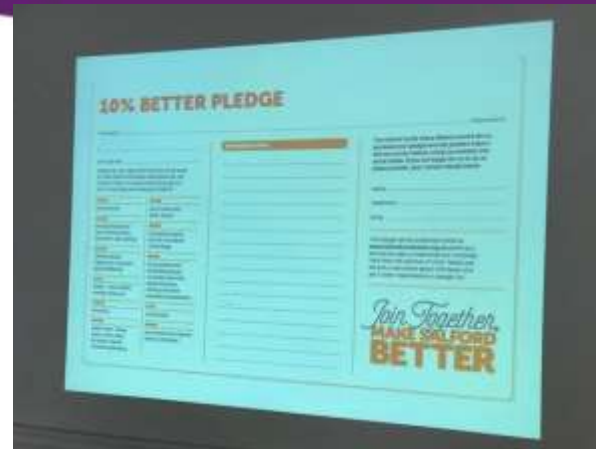


Salford CVS
making a difference in Salford





Salford CVS
making a difference in Salford





Salford CVS

making a difference in Salford





Salford CVS

making a difference in Salford



Are you in the Boat?

Saturday 7th July, 11am - 3pm

Helly Hensen Watersport Centre, Salford Quays M50 3SQ

Boat Races, stalls, cakes, pasties, talks, films, climbing wall ...

A great day - for young, old and those in the middle!

esmith@ageuksalford.org.uk
Dementia Support Services - 0161 728 2001
www.ageuksalford.org.uk



The PINK PICNIC
SALFORD PRIDE 2018
SATURDAY 14th JULY - 1:00pm til 8:00pm
PEEL PARK, SALFORD - M5 4PD

HEADLINE ACTS
UNION J
THE CHEEKY GIRLS
AND
X-FACTOR'S
SAMI BROOKES
& AMRICK CHANNA

MAINSTAGE
UNION J • THE CHEEKY GIRLS • SAMI BROOKES • AMRICK CHANNA
KIAN JACKSON-TAYLOR | WOLFEY | SAL FORD | BLAQ IVORY
SAMANTHA LEON | BOB KING | RYND | MICKEY TAYLOR | SALFORD ZHOOSH
GRANDPASTE WINNERS | GARDEN BUSKINOP TEAM | MANCHESTER LESSON & GAY CHORUS

PLUS ...
COMMUNITY STALLS | GLITTER & FACE PAINTING | INFLATABLES
OUTDOOR ACTIVITIES | BAR | FOOD & DRINK VENDORS
BEST DRESSED DOG COMPETITION

The PINK PICNIC 2018 is PROUDLY SPONSORED BY ...

www.pinkpicnic.org.uk | Email: info@pinkpicnic.org.uk

BRIDGEWATER WEEKENDER
Sunday 8 July 2018
12noon - 6pm
Duke's Drive, Monton

EST1761.ORG

Salford Citizen's Panel Event

Do you live or work in Salford? Help shape future plans to reduce ill health in the city and empower communities to take control.

What will we be talking about?

Devo Difference - two years ago Greater Manchester took control of its health and social care budget, but what difference has it actually made to the people of Salford?

How you can find out more and help shape the plans for Salford CCG and Salford City Council to make more decisions about health and care commissioning together from April 2019.

The panel event will be followed by the CCG's Annual General Meeting where we will present how we spent the NHS budget on health services during 2017/18 and highlight some of our key achievements.

There will be lots of information, interactive activities, entertainment and a free lunch.

Wednesday July 18th 10:00am

Please inform when booking if you have any dietary requirements

Book now as places are limited

E mail: Sandra.lindsay1@nhs.net Tel: 0161 275 1111
Free parking & help with transport



WALKDEN & LITTLE HULTON
Wellbeing FESTIVAL
SATURDAY 21st JULY 2018
12.00noon - 5.00pm
Parr Fold Park, Walkden, M28 7EA

LIVE MUSIC · INFLATABLES · FOOD · DONKEYS
HEALTH & WELLBEING MARQUEE · SPORTS
CLIMBING WALL · LOCAL COMMUNITY GROUPS
HEALTH CHECKS · STALLS · FACE PAINTING & MORE





Salford CVS
making a difference in Salford

Voices from the VCSE Sector





Salford CVS
making a difference in Salford

Delana Lawson

Healthwatch Salford



Healthwatch Salford - our priorities, our work

Delana Lawson, Chief Officer- Healthwatch Salford

What we do

- **Influencing good health and social care**
by gathering views and experiences and telling the providers where services are working well and not working so well



Signposting

people into correct pathways for raising a complaint and referring them for advocacy support

- **Watchdog**
monitoring existing health and care services especially during periods of change

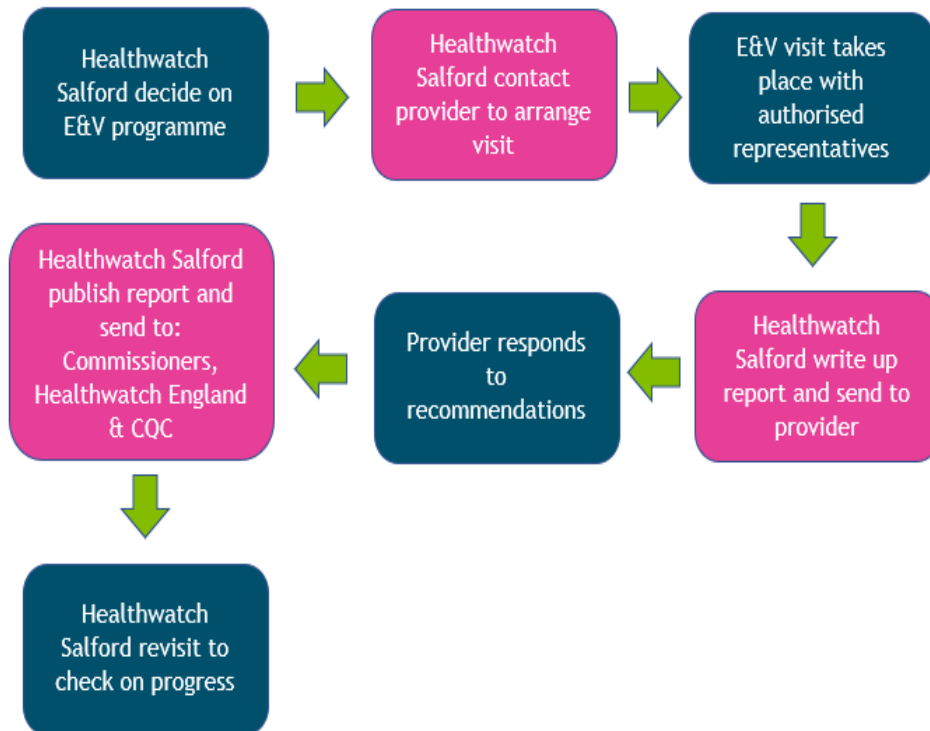
Last year's work - *some examples*

Evaluating Care Homes

- 10-month project
- Enter and View visits into 16 homes
- Resulting in 87 recommendations in total



Quick overview of the enter and view process



Prisoner Listener Wellbeing, training and mentoring

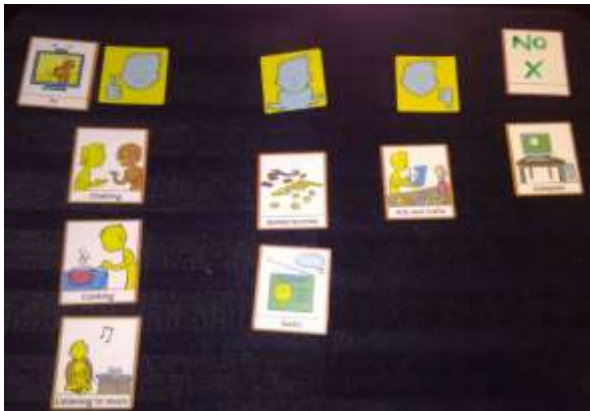


Health Access and Homelessness

- Phase 1: initial survey of 122 people experiencing homelessness
- Service users engaged through 6 partner organisations
- Report published in May
- Phase 2: focused project planned for later in 2018

Our priorities this year

Accessible information Standard 2015, and Access Audits project



Priorities:

1. Increase volunteering and diversity of volunteers
2. Work with partners to re-establish principles and standards of engagement
3. Strategically engage across the new emerging health and social care structures locally and across GM
4. Raise our profile and market ourselves more consistently
5. Continue to support patient involvement and voice

Health Access and Homelessness project

Phase 2 – focused project



Measuring + reporting on our Social Value +

Social Value
in Salford



A&E project



Let's keep talking!

Today we would like to start a conversation between you and Healthwatch Salford!

We want to hear from you about your experiences of across Salford so we can work together to improve health and social care.



Phone: 0330 355 0300



Email: feedback@healthwatchsalford.co.uk



Post: Healthwatch Salford
The Old Town Hall,
5 Irwell Place,
Eccles, M30 0FN



Website: www.healthwatchsalford.co.uk



Facebook: Healthwatch Salford



Twitter: @HWSalford





Salford CVS
making a difference in Salford

Aderonke Apata

African Rainbow Family



African Rainbow Family

A World Without Prejudice



**AFRICAN
RAINBOW
FAMILY**
LGBTIQ EQUALITY

**SUPPORT FOR LESBIAN, GAY,
BISEXUAL, TRANSGENDER AND
QUEER (LGBTIQ) PEOPLE OF
AFRICAN HERITAGE**

- **Support LGBTIQ People Seeking Asylum & Refugee**
- **Campaigning For Global LGBTIQ Equality**
- **Stand Against Hate Crimes**



AfricanRainbowFamily



@AfricanRainbow1



07711 285 567



info@africanrainbowfamily.org



africanrainbowfamily.org

Love is Love, Love Is Not A Crime

- **Our history:** founded by a lesbian in 2014
- **Our Vision** is 'A World Without Prejudice'
- **Objectives**
- To support all marginalised, oppressed and discriminated others
- **Our Mission:** Building A Supportive Community
- We are lesbian, gay, bi and trans people, from here and abroad.
- Created, run and led by people who are affected by the issues we are aiming to change
- We understand each other and have got together to help each other and just tell each other 'It's OK to be different'.
- We believe that our experience has given us the insight and empathy needed to support each other.
- We remove isolation and support our emotional wellbeing through counselling and other confidence building and empowerment activities.
- From nothing and with no money we have developed a national network of over 250 people with branches in Manchester, Birmingham and Leeds.
- We heavily rely on volunteers to deliver the crucial and life saving work that we do.
- We will continue to help, support and nurture each other until our work is no longer needed.

My Roles As Leader of ARF

- Influenced new guidance of the Home Office on SEXUAL IDENTITY ISSUES IN THE ASYLUM CLAIM (2015) especially around non- acceptance of sexually explicit audio visual material submission as part of evidence in assessing LGBTI asylum applications
- Review asylum policies at European wide level as they affect LGBT people seeking asylum at the European Parliament.
- Reviewed and contributed to the Home Office Asylum Screening and Routing Policy.
- Gave oral and written evidence at the Joint Inquiry by APPG on Refugees & Migration (page 68) into the Use of Immigration Detention in the UK seeking asylum.
- Keynote speeches at Trades Unions conferences, various universities and many other organisations including The Department of Justice and Office of The Public Guardian.
- Inspirational speaker

My Roles As Leader of ARF

- Evidence submissions to the UK All Party Parliamentary Party Group (LGBT) in 2016 on:
 - A) “The role that UK parliamentarians can play in championing LGBT rights worldwide and responding when such rights are threatened with particular respect to UK Asylum Seekers” and
 - B) “The role that UK parliamentarians can play in championing LGBT rights worldwide and responding when such rights are threatened with particular respect to the homophobic anti-gay law in Nigeria.
- Ongoing campaign to repeal Nigeria antigay law
- Organised the first ever LGBTIQ refugee conference by LGBTIQ refugees themselves that calls for end to ‘vile’ proof of sexuality policy: *Conference marks 50 years since landmark of homosexuality law reform; Refugee speakers explored ongoing plight of LGBT people seeking asylum in UK and Call for Home Office to drop ‘proof of sexuality’ policy in June 2017.*

The need and our beneficiaries

- Reduce social isolation
- Promote better mental health
- We are 'experts by experience' and understand our plights hence able to lead on how to be supported.
- Our beneficiaries are LBGTIQ+ people including refugees and those seeking asylum.
- People with no recourse to public funds

Plans for the next 12 months

- Continue in our social change
- Register as a charity
- Look for an operational office
- Employ a paid staff





Salford CVS
making a difference in Salford

Jasmin Hassan

Women with Wings





Jasmin's Cakes



Women With Wings

Women With Wings was founded on 7th of March 2017.

Our aim is to inspire, empower, inform and support local women to engage into employment, self-employment or education.

We aim to achieve this through delivering training workshops, networking events and forging partnerships with local organisations.

Our outcomes will include moving our members closer to formal training, employment or self-employment.



A photograph of a steep, green mountain slope. A winding, light-colored path or road is visible, snaking up the hillside towards a peak. The path starts from the bottom right and curves upwards and to the left. The mountain is covered in dense green vegetation. The sky is visible at the top, showing some clouds and a bright light source.

JOURNEY AND CHALLENGES OF WOMEN WITH WINGS

- Coming from deprived family and areas, most women have limited belief of what they can do and achieve in their life.
- Most women are motivated and inspired while in the meeting and go back to their comfort zone after that.
- So they stay in their comfort zone and don't take step forward.
- So I decided to run workshops to train their mind set to unlock their barriers, find their potential and come out of their comfort zone.
- Increase confidence, self esteem, empowerment, wellbeing and happiness.
- Training bring them step closer to employment and self employment.
- Reduce mental health, depression and build strong relationship in the community.

Positive Outcomes



FUTURE PLAN OF WOMEN WITH WINGS

**Women With Wings
Community space**

***A space where we
can***

- ✓ Meet
- ✓ Learn
- ✓ Train
- ✓ Trade
- ✓ Work
- ✓ Thrive

Thank you for listening



Jasmin Hassan
Women With Wings
“make your ideas fly”



Salford CVS
making a difference in Salford

Graham Cooper

The Broughton Trust



Who We Are

The Broughton Trust was established in 1999 and has grown into a key anchor organisation working across the city of Salford.

We are based in Lower Broughton, and have strong roots in the area, but our work covers the whole city.

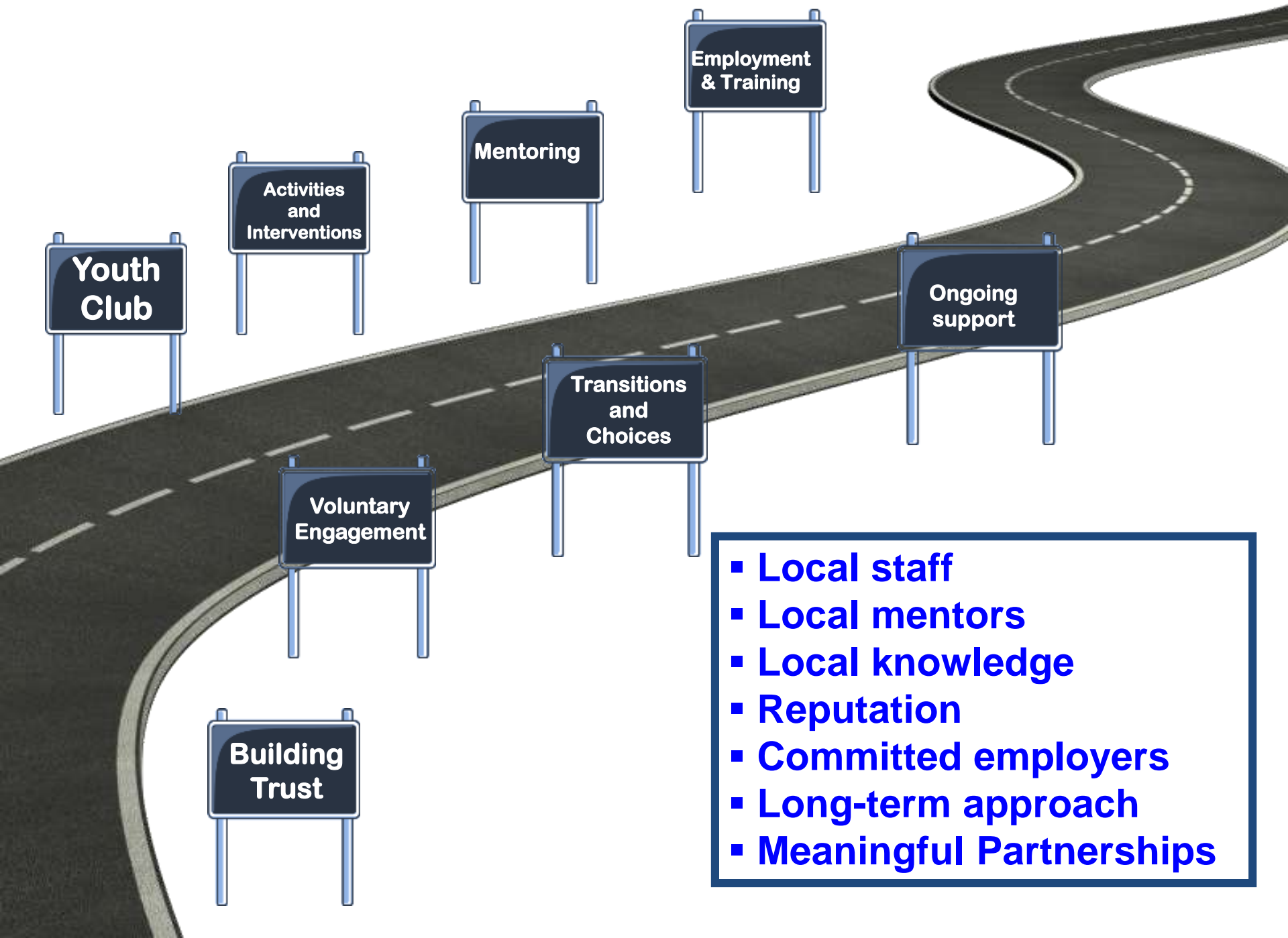
What We Do

- Learning opportunities
- Employment support
- Youth work
- Information, advice and guidance
- Community support
- Community research
- Specialist, targeted youth provision

“quite simply one of the most inspiring organisations in Salford...the glue that sticks so many initiatives together”
Matrix assessment 2014

In the last five years the Broughton Trust has brought £3,610,000.00 into the City's economy





- **Local staff**
- **Local mentors**
- **Local knowledge**
- **Reputation**
- **Committed employers**
- **Long-term approach**
- **Meaningful Partnerships**

What Next?

Our new Big Lottery-funded Bridging the Gap programme takes an integrated, person-centred approach, directing and case-managing individual people's journeys over three years. Support available includes:

- Information, advice and guidance
- Signposting and referrals
- Non accredited and accredited community-based learning
- Vocational training including: Health and Safety and CSCS Cards
- Employment brokerage and matching
- Development of wider youth provision with city-wide outreach

“Our approach is not safe and cautious. It is exciting, bold and risky because that is what works.”

**Mike Thorpe,
CO, The Broughton Trust**





Salford CVS
making a difference in Salford

People and Communities: Investing in the VCSE Sector

Jenny Rouse

Head of Regional Funding – North West

Big Lottery Fund





**NATIONAL
LOTTERY FUNDED**



People and Communities: Investing in the VCSE Sector

5th July 2018

Jenny Rouse

Head of Regional Funding - North West

Big Lottery Fund

www.biglotteryfund.org.uk

Civil Society



**NATIONAL
LOTTERY FUNDED**

**Organisations, groups and spaces that
support individuals and
communities, allowing people to
take action for the benefit of
society**



Civil Society in a place



**NATIONAL
LOTTERY FUNDED**

Local
authority

Health
services

Local
organisations

National
charities

Faith
networks

Infrastructure
bodies

Business
doing good



The importance of local organisations



People

Ideas

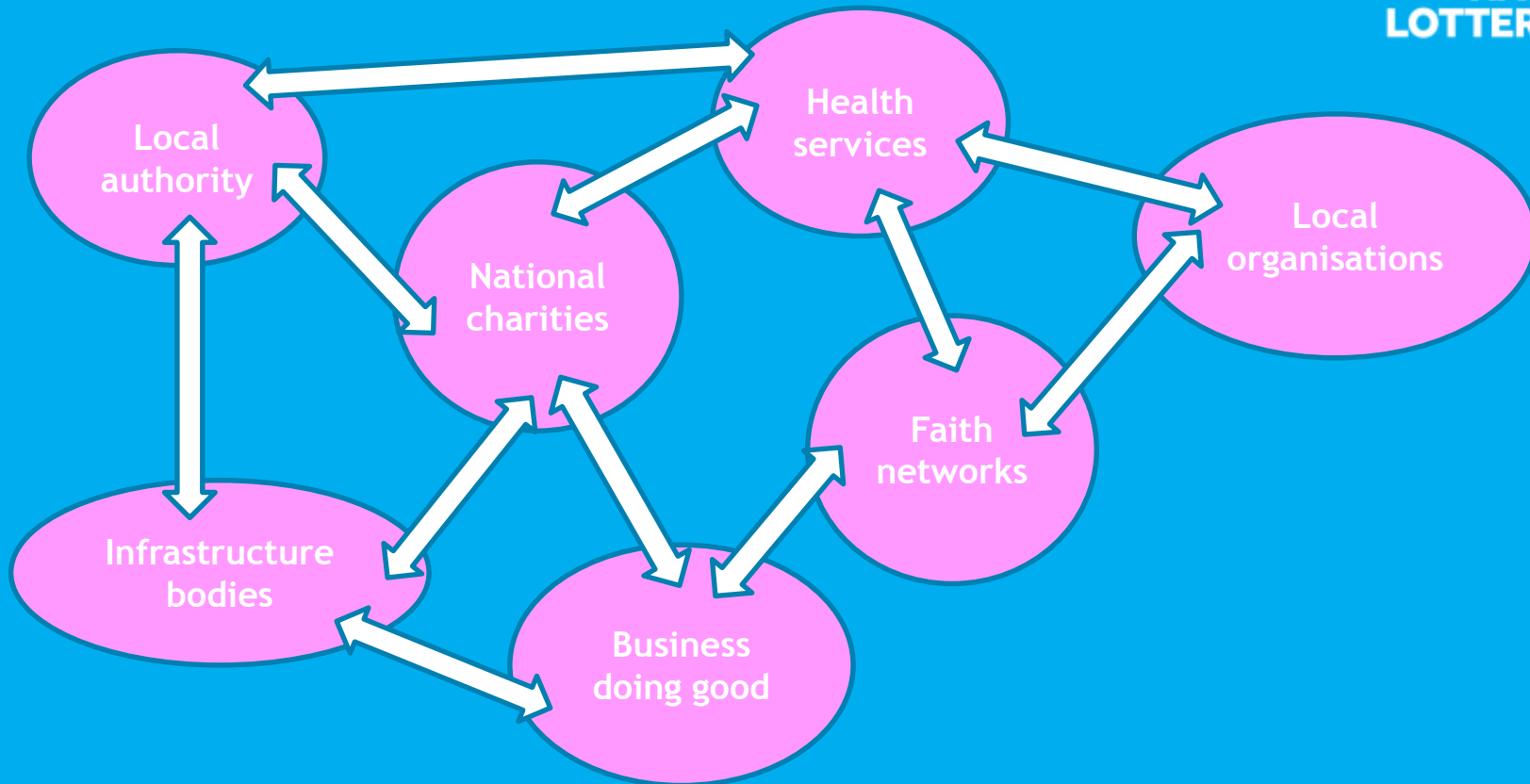
Issues



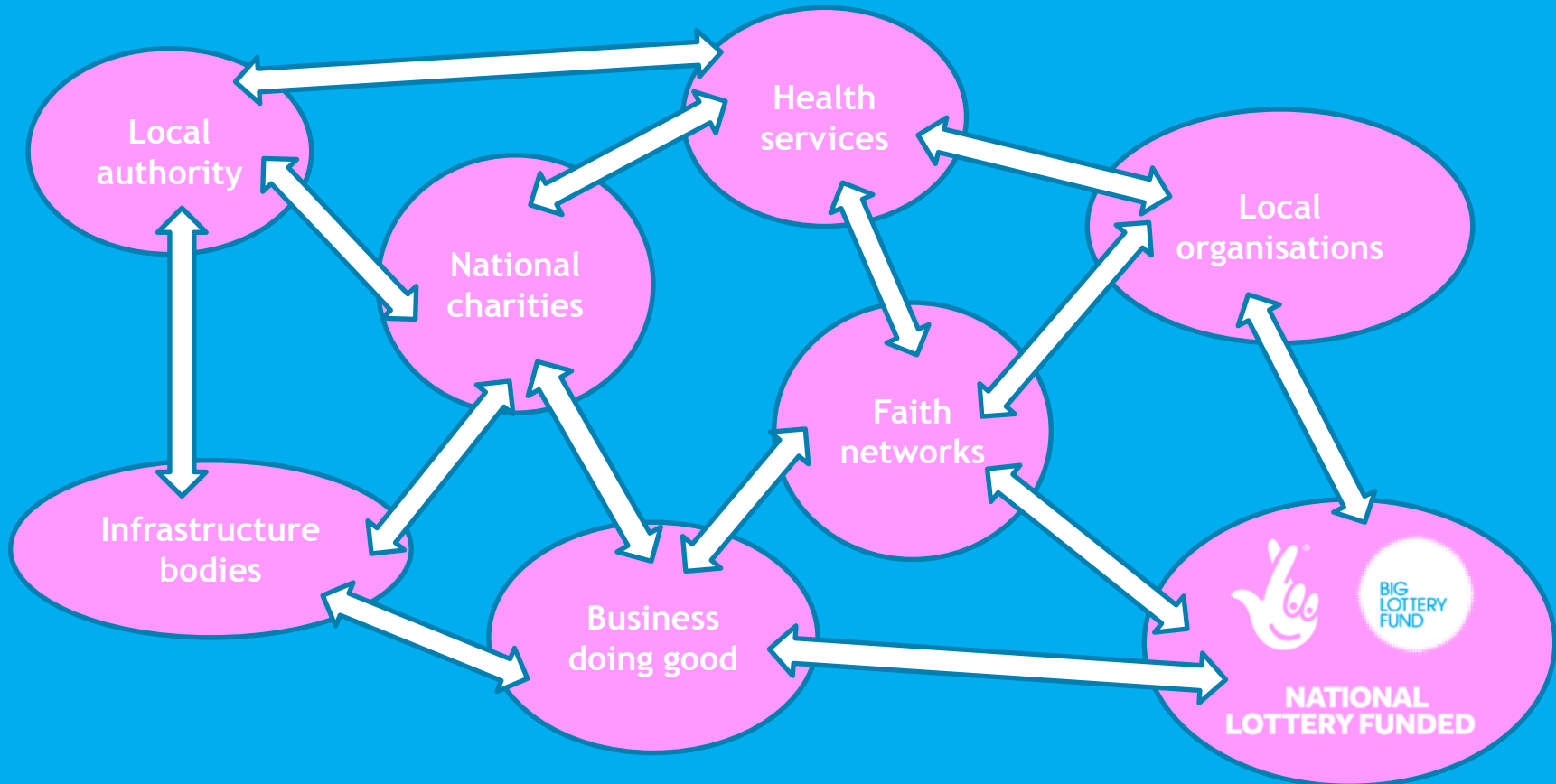
Civil Society in a place



**NATIONAL
LOTTERY FUNDED**



Civil Society in a place



Big Lottery Regional teams



**NATIONAL
LOTTERY FUNDED**

**All Reaching Communities and Partnerships
funding:
grants of £10,000 or above**

- **Reduce barriers to accessing funding**
- **Work with places and civil society**
- **Build positive and trusting relationships**



Big Lottery in Salford



**NATIONAL
LOTTERY FUNDED**

- Salford has its own Funding Officer - Suko
- Works in Salford once or twice a week
- Meeting organisations applying for funding and other local organisations
- Finding out what matters to people and their communities





Salford CVS
making a difference in Salford

People and Communities: Investing in the VCSE Sector

Q&A

with Jenny Rouse

Head of Regional Funding – North West
Big Lottery Fund





Salford CVS
making a difference in Salford

Launch of:

‘At the heart of creating a better and fairer Salford: A strategy for the voluntary, community and social enterprise (VCSE) sector in Salford, 2018 – 2023’

Anne Lythgoe, Salford CVS

Anthony Hassall, NHS Salford CCG

David Seager, Salford City Council

Sheila Murtagh, VOCAL VCSE Leaders Forum





Salford CVS
making a difference in Salford

At the heart of creating a better and fairer Salford

A strategy for the voluntary, community and social enterprise sector in Salford, 2018 - 2023

Anne Lythgoe

Strategy and Policy Lead, Salford CVS



Background

- 2016 - VCSE Manifesto
- Joint commitment - City Mayor and other public sector leaders to develop a more strategic relationship with the VCSE sector in Salford
- Multi-agency writing group
- Discussion at VCSE Conference in 2017
- Extensive engagement



Why have a strategy?

- Austerity
- Increasing inequality
- Financial and market pressures
- Innovation
- Partnerships
- Challenge perceptions
- The 'perfect storm'



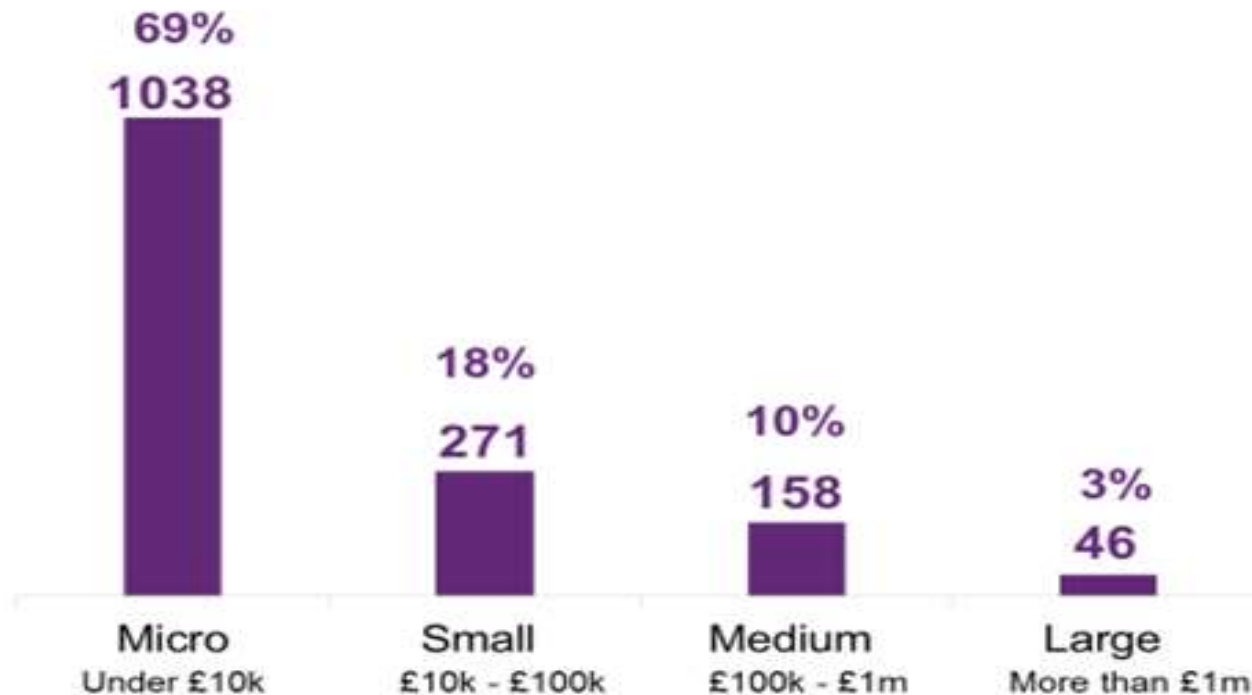


Writing the strategy

- *What we want to achieve together*
- *Examples which already demonstrate our strategic approach*
- *What else do we need to do?*
- *We will know that we have been successful when...*



Writing the strategy





Salford CVS
making a difference in Salford

Vision

A city where voluntary organisations, community groups and social enterprises are at the heart of creating a better and fairer Salford



Aims

Together, we have developed this Strategy to describe the position and role of the VCSE sector in Salford in terms of how it supports and benefits local people, delivers services and influences city-wide policy and strategy

- **Shared goals**
- **Shared risks**
- **Shared values**
- **Shared concerns...**



What's in the strategy - commitments

- ***Sharing information and intelligence*** – about relevant and available VCSE activity; about population, local statistics, business development, commissioning and budget proposals, etc.
- ***Sharing connections*** and ability to influence
- ***Collaboration and involvement in strategic discussions*** (including budget-setting), project development, co-production, co-design and equal partnership
- ***Undertaking impact assessments*** – however simple, relating to the sector, inclusion and equality
- ***Keeping and sharing records of performance, impact, social value***, in a way that is proportionate and flexible
- ***Upholding*** existing agreements and codes of practice



What's in the strategy - actions

- *Involve*
- *Include*
- *Collaborate*
- *Value*
- *Invest*
- *End (poverty)*



If we get this right...

- A clear position and role
- Recognition – VCSE activity, volunteering, reach into communities
- Consistency of practice and strong relationships
- Resources for VCSE activity that are appropriate, accessible, and sustainable in the longer-term
- Effective collaboration, co-production and co-design with local people
- Valuing the contribution of voluntary activity and providing the necessary support and resources



Next steps

Deliver the Action Plan...

- Investment Strategy
- Representation of VCSE sector
- Physical Assets in Communities
- Collaboration Task Force
- MoU with Salford Together
- Volunteering Strategy - Action Plan



Salford CVS
making a difference in Salford

Download the full VCSE Strategy at:

www.salfordcvs.co.uk/VCSE-strategy



Salford CVS
making a difference in Salford

What will the strategy enable us to achieve by working together?

Anthony Hassall
Chief Accountable Officer
NHS Salford CCG



Salford

Clinical Commissioning Group



Salford CVS
making a difference in Salford

Simple – it will support the delivery of the Salford Locality Plan:

‘Salford people will start, live and age well - People in Salford will get the best start in life, will go on to have a fulfilling and productive adulthood, will be able to manage their health well into their older age and die in a dignified manner in a setting of their choosing. People across Salford will experience health on a parallel with the current “best” in Greater Manchester (GM), and the gaps between communities will be narrower than they have ever been before.’

NHS

Salford

Clinical Commissioning Group



It's based on and builds on - investment, shared values and strong relationships

NHS Salford CCG – has a strong record of investment in the VCSE sector:

- Third Sector Fund - £3 million over 3 years
- CCG Innovation Fund
- VCSE service contracts
- Jointly funded programmes with the local authority

The strategy and plan are owned by the sector but based on agreed shared values:

- Trust
- Transparency
- Simplicity, proportionality and fairness
- Being inclusive



Going the extra mile

The strategy and implementation plan build on this history of excellent joint working.

But more importantly –

It presents a plan for how we might consolidate the work and enhance the role of the VCSE sector

Future challenges:

- Keep innovating and focusing on outcomes
- Don't be afraid to stop stuff which doesn't work or have biggest impact
- Cooperate and collaborate



Salford CVS
making a difference in Salford

Why is this strategy so important for Salford?

David Seager
Assistant Director
Salford City Council

Salford City Council



Salford CVS
making a difference in Salford

Why is this strategy so important to the VCSE sector?

Sheila Murtagh

Chief Executive, Salford Credit Union

on behalf of

VOCAL VCSE Leaders Forum



A VCSE forum facilitated
by Salford CVS



- Part of the writing group for this strategy
- The strategy is ambitious - we're all ambitious for Salford
- The strategy is important for the sector because it should improve our profile, enable us to play a more effective role and should also support greater sustainability for the sector in the long term



- Recognises the major contribution of the sector and potential for more
- The VCSE sector wants to do more - and we know we need to respond to this opportunity
- The action plan is the starting point to deliver the shared vision and outcomes - the hard work starts now



Salford CVS
making a difference in Salford

Memorandum of Understanding between the VCSE sector and the partner organisations in Salford Together

What will this MoU help us to achieve?

Anne Lythgoe

Strategy and Policy Lead, Salford CVS





Salford CVS
making a difference in Salford

What is the MoU?

Memorandum of Understanding...

gives the VCSE sector an equitable role in Salford Together; as a key strategic partner in health, social care and wellbeing activities which will achieve the outcomes described in Salford's Locality Plan.

2018 - 2021



Salford CVS
making a difference in Salford

What does it include?

- An inclusive approach
- Development of alliances
- Recognition of community and individual assets
- The talent, reach and social value of VCSE sector activity

Start well.
Live well.
Age well.
OUR SALFORD



Aims

- A clear position and role
- Recognition – VCSE activity, volunteering, reach into communities
- Consistency of practice and strong relationships
- Resources for VCSE activity that are appropriate, accessible, and sustainable in the longer term
- Effective collaboration, co-production and co-design with local people
- Valuing the contribution of voluntary activity and providing the necessary support and resources



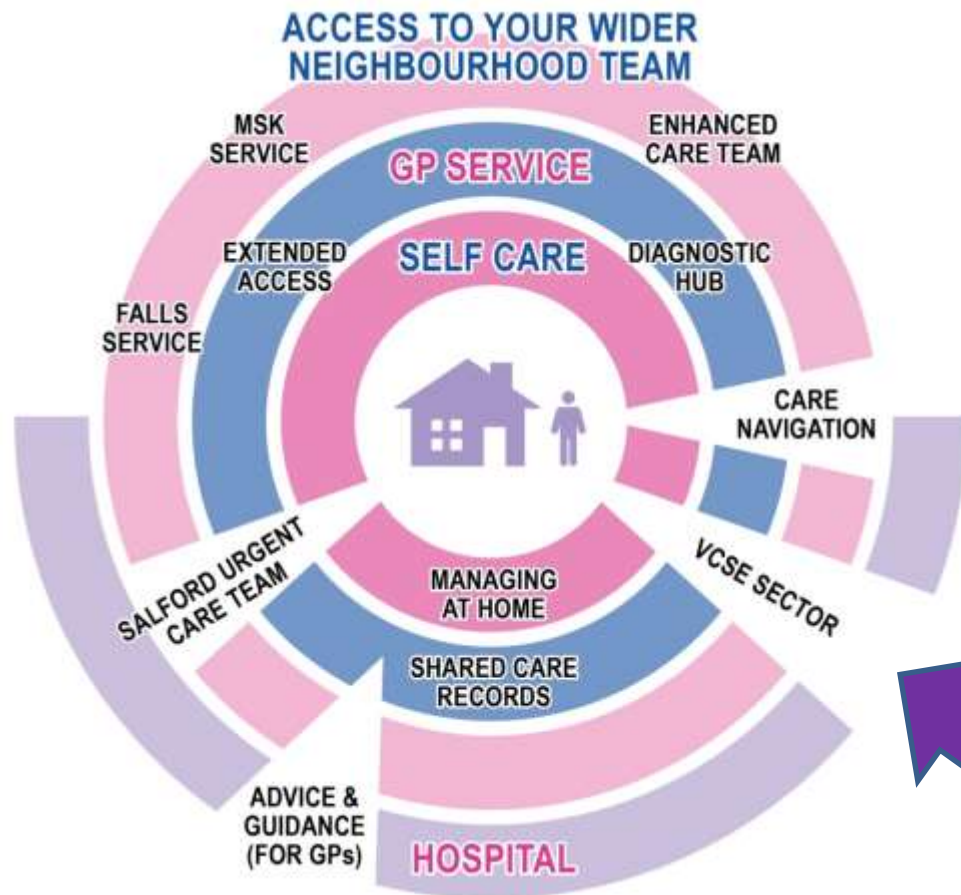
Principles

- Prevention, early help and intervention
- Person-centred
- Co-creating
- Doing with, not for
- Asset-based approaches to supporting people
- Self-care
- Promoting independence
- Just enough support when needed



Salford CVS
making a difference in Salford

A key strategic partnership for the VCSE sector



**SALFORD
TOGETHER**
HEALTH & SOCIAL CARE WORKING
WITH YOU AND YOUR COMMUNITY



If we get this right...

- ✓ Salford people live healthier lives
- ✓ Improved self-care and resilience in local communities
- ✓ Increased provision of community-based care and support
- ✓ Reduced reliance on primary and secondary care
- ✓ A more efficient, high quality and effective health and social care system



Salford CVS
making a difference in Salford

Question

What do you think is the one big thing that we should use this MoU to achieve?





Salford CVS
making a difference in Salford

Views from the conference

Facilitated by:

Marie Wilson

Consortia and Partnerships Manager

Salford CVS





Salford CVS
making a difference in Salford

Break and Refreshments





Salford CVS
making a difference in Salford

Workshops

Hearts and Minds: telling your social story

Fans Bar, ground floor

Tech for Good

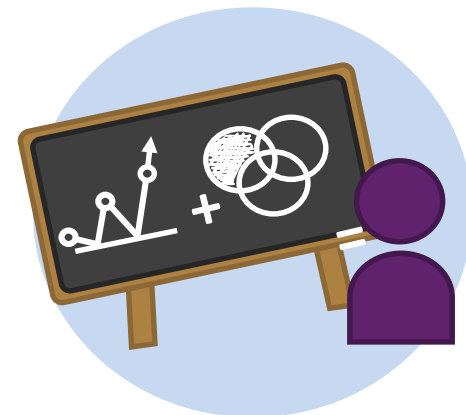
Press Lounge, ground floor

Pound-Stretching: maximising resources

Executive Boxes 2/3, 3rd floor

Trading for Social Benefit

Willows Suite, 3rd floor





Salford CVS
making a difference in Salford

Lunch and Networking





Salford CVS
making a difference in Salford

Plenary Session: 'Enterprisingly Social'

Chaired by Grace Dyke

Co-founder and Director, Yellow Jigsaw
Trustee, Salford CVS





Salford CVS
making a difference in Salford

‘Enterprisingly Social’ speakers:

Fay Selvan

Founder and Chief Executive, The Big Life Group

Lucy Danger

Founder and Executive Director, EMERGE

Geoff Thompson MBE

Founder and Executive Chair, Youth Charter





Salford CVS
making a difference in Salford

Fay Selvan

Founder and Chief Executive
The Big Life Group





Enterprisingly Social

Fay Selvan
Group Chief Executive



Big Life is in the business of changing lives,
creating opportunities for people who have the least









We start where people are at and help them get to where they want to be



Nearly 30 Years on....

- Trend of last 20 years to reduce numbers of pensioners and children living in poverty reversed and now rising
- Infant mortality rising for the first time in 30 yrs
- 30% of children living in poverty with two thirds of them in households with working parent
- LA budgets cut by 40% since 2019 and rising costs of older people (up 14%) and children in care (up 11%)

- Homeless families risen by 50% since 2010 and 73% increase in rough sleeping in last three years
- 78 people died on the street last year
- Impact of policy of 'hostile environment' for immigrants – Windrush, NHS charges, Landlord checks
- Outsourcing disasters.....

Our Response?

- Insourcing not the answer
- Problems with commissioning
- Community asset and place based approach
- Opportunities for Innovation
- New type of partnership



Salford CVS
making a difference in Salford

Lucy Danger

Founder and Executive Director
EMERGE





emerge

Lucy Danger

Chief Executive, EMERGE 3Rs





emerge



‘Lucy’s Sweet Shop’ circa 1976, Woodstock

Who, why, what...?



‘East Manchester Environment & Resources Group Emerge’

- Voluntary organisation established in 1996
- Registered as company limited by guarantee in 1998
- Registered charity with wholly owned subsidiaries 2009
- ‘Open’ membership organisation for wider community
- Board of Trustees; principle of ‘community-run’
- Senior Management Team hierarchy



emerge





emerge








emerge



Commercial Recycling



- We collect and bulk full range of dry recyclables inc WEEE, some 'hazardous' waste;
- Offer 'integrated waste management' /'one stop shop' (inc residual disposal, furniture, food)
- 1000 business & schools' collection customers
- ISO9001/BSEN15713 accredited confidential data collection & shredding service
- Geographical coverage Manchester & surrounds
- Fleet of 12 vehicles; 7 day coverage & capacity





touch
WOOD



Part of EMERGE 3Rs 
emerge



How FareShare Works



FareShare Greater Manchester redistributes surplus food from the food industry...



...with the help of an army of volunteers...



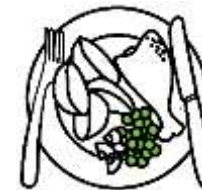
...who turn it into nutritious meals...



...to 230 frontline charities and community groups...



...for just over 20,000 vulnerable people every week...



...last year we provided enough food for over 1.8 million meals.

Give & Gain Volunteer & Employability Programme



*‘It motivates you to actually **do** something’*

‘more confident and positive and given the encouragement to move forward’

‘I gained my Level 2 Food Safety Award’



Proud to
support
**LOVE
FOOD**
hate waste




emerge



Our Vision

To be a leading charitable enterprise that, across Greater Manchester:

- Enables people to reduce, reuse and recycle more and better;
- Fights hunger and tackles food waste;
- Creates opportunities to improve lives;
- Influences positive changes.



@LucyDanger
@EMERGERecycling
@EMERGEWood
@FareShareGtrM
0161 223 8200

www.emergemanchester.co.uk



Salford CVS
making a difference in Salford

Geoff Thompson MBE

Founder and Executive Chair
Youth Charter



Geoff Thompson MBE, FRSA, DL

Being Enterprisingly Social

The importance of local voluntary organisations, community groups and social enterprises and how they can engage with commercial business to help further their objectives.





Salford CVS
making a difference in Salford

Enterprisingly Social

Q&A

with Fay Selvan, Lucy Danger and
Geoff Thompson MBE

Chaired by Grace Dyke





Salford CVS
making a difference in Salford

Workshops

21st Century Volunteers - adapting roles for today's volunteers

Fans Bar, ground floor

Futurism - exploring the concept of community in a virtual world

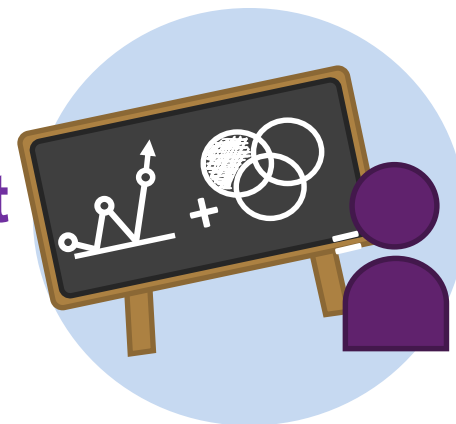
Willows Suite, 3rd floor

Let's Make Campaigning Great Again!

Executive Boxes 2/3, 3rd floor

Money, Money, Money – learn more about the GM Social Investment Fund

Press Lounge, ground floor





Salford CVS
making a difference in Salford

Tea and coffee on route back to main conference room





Salford CVS
making a difference in Salford

Inclusion in the VCSE Sector

Leo Capella
Communications Officer
Disability Rights UK





[This Photo](#) by Unknown
Author is licensed under
[CC BY-SA](#)

Inclusion in the VCSE Sector: Building our own Enterprise

Leo Capella 5th July 2018

In this keynote my challenge is to...

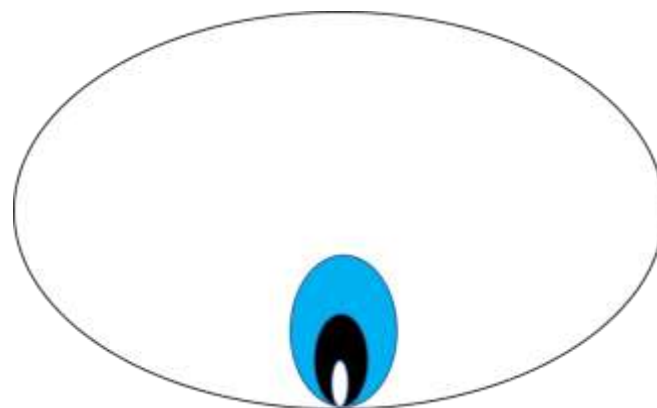
- **Not send you all to sleep before you leave this place**
- **Nor put you to death by PowerPoint!**
- **Instead I want to tell you about why inclusion matters in the sector...**
- **And send you out on a continuing mission.**

Inclusion is part of our DNA at Disability Rights UK... it's our reason for being what we are.



Inclusion brings extra perspectives and purchasing power which means...

£249bn



It makes our voices more effective when talking to officials...



It matters to your employees...



It leads to projects getting excellent results locally and beyond...



It matters when we challenge industries to be more inclusive and...







Salford CVS
making a difference in Salford

The Great Big VCSE Poll

Facilitated by:
Becky Roberts
Information &
Communications Worker
Salford CVS





Salford CVS
making a difference in Salford

What theme would you like to feature at our VCSE conference in 2019?

A. Inclusion

B. Environment

C. Health and Wellbeing





Salford CVS
making a difference in Salford

Same time next year?

Alison Page
Chief Executive
Salford CVS





Salford CVS
making a difference in Salford

Finally...



- We hope you've enjoyed the day
- Please tell us what you think – complete your evaluation form and also the equal opportunities form
- Please also hand in your NHS70 message, your Tackling Poverty and *10% Better* pledges, and your comments sheet on the draft H&SC MoU
- Thank you to all of our fantastic keynote speakers
- Thanks also to our workshop presenters and facilitators
- Thanks to those who gave us photos and films – and to Ben for pulling it all together
- Thanks to the whole Salford CVS staff team for all their hard work preparing for this conference, especially the task group members!
- Most of all, thanks to you all for attending... same time next year?

