



- The front of the AJ Bell Stadium
- Free parking at the front of the stadium
- For more on how to get to the Stadium see:  
[www.salfordcvs.co.uk/travel-aj-bell-stadium](http://www.salfordcvs.co.uk/travel-aj-bell-stadium)



- Parking spaces for Disabled People go up to this sign
- Head to the West Stand/Reception



- Parking spaces for Disabled People at the front of the Stadium
- There are 26 spaces



- Front of building – left of entrance
- Spaces for bicycles



- Main entrance



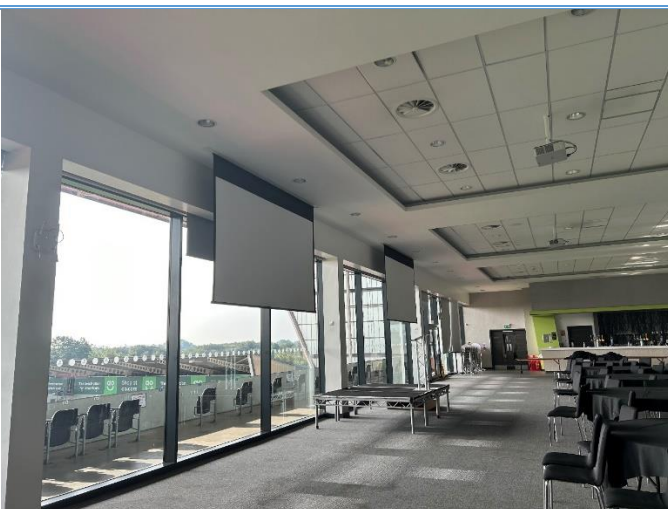
- Main entrance – lift and stairway
- There is another lift on the other side
- There will be Salford CVS staff and signage



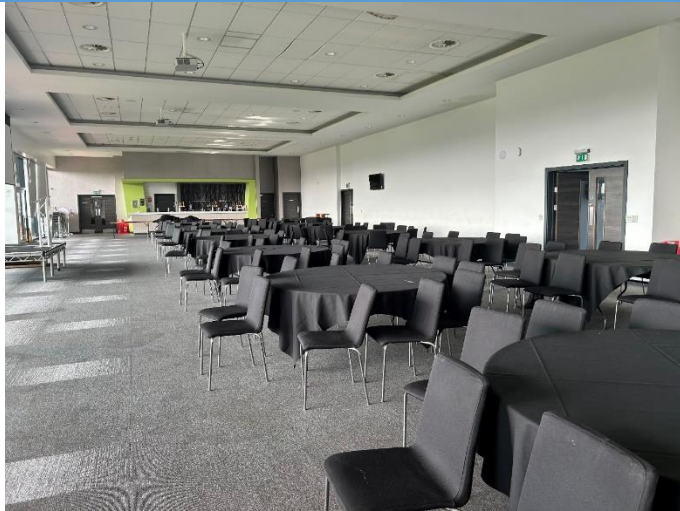
- The other lift



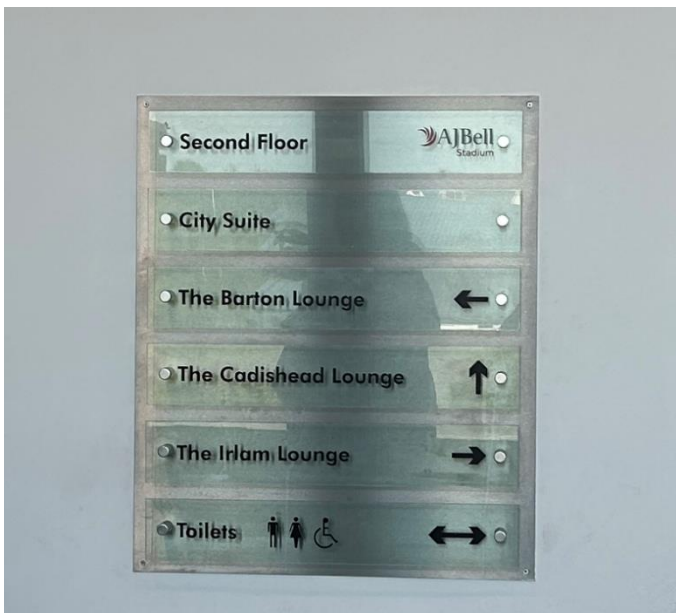
- As you come out of the lift there will be a signing-in desk
- There will be Salford CVS staff to help and signage



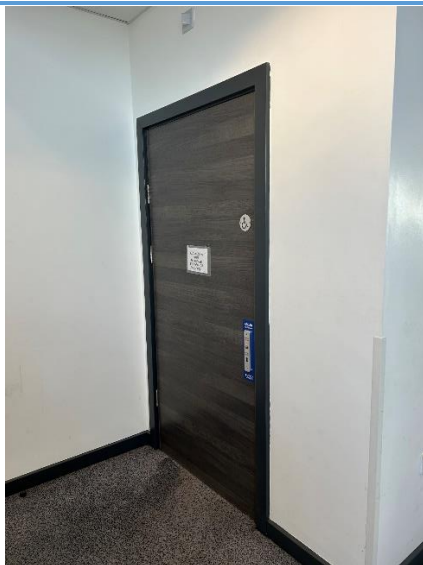
- You will be directed to the main room



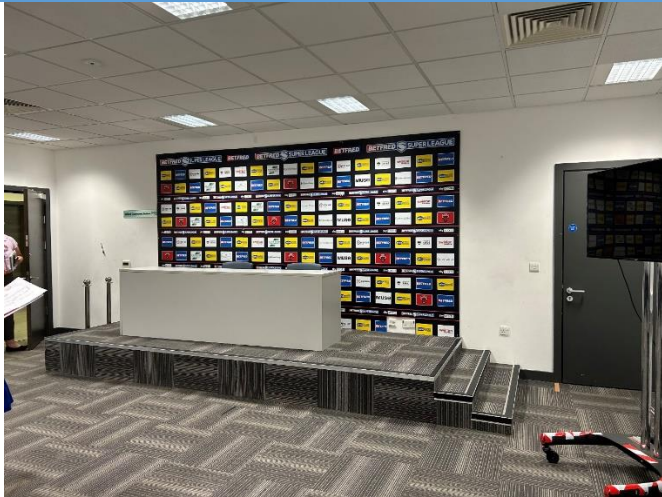
- Main room



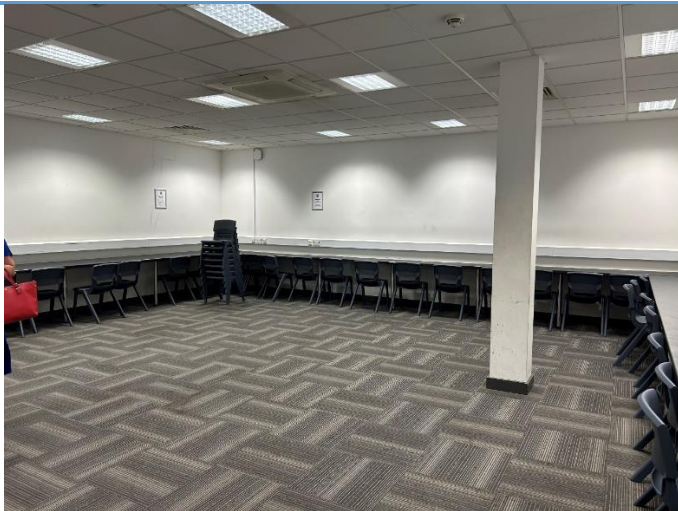
- We will be using The Barton Lounge, The Cadishead Lounge and the Irlam Lounge
- The Barton Lounge will have the refreshments/lunch and will also be a breakout room
- The Irlam and Cadishead rooms will be opened up together to a big space



- Accessible toilets are on the same floor to the left and right of the lounges
- There aren't any changing places toilets



- We will be using the Press Room as one of the breakout rooms
- It is downstairs near the front entrance in the reception area



- The room will be set up theatre style for the breakout room workshop
- There will be space at the front for wheelchair users
- The Barton Lounge will also be a breakout room



- Door from The Barton Lounge to the main room we will be using