



**Salford CVS**  
making a difference in Salford

# RADICAL ROOTS TO PRACTICAL ACTION

**Salford  
VCSE Conference  
Thursday 23<sup>rd</sup> May 2019  
AJ Bell Stadium  
#RadicalRootsSalford**





**Salford CVS**  
making a difference in Salford

**ADD YOUR RADICAL ROOTS**

**DATE FOUNDED:**

**ORGANISATION NAME:**

**YOUR LOGO:**

**RADICAL ROOTS TO PRACTICAL ACTION**

# ADD YOUR ROOTS TO THE TIMELINE



**#RadicalRootsSalford**



**Salford CVS**  
making a difference in Salford

# WELCOME

**Alison Page**  
**Chief Executive**  
**Salford CVS**

**#RadicalRootsSalford**





**Salford CVS**  
making a difference in Salford

# WELCOME AND HOUSEKEEPING

- Welcome to **Radical Roots to Practical Action** – our 5<sup>th</sup> annual VCSE conference
- Housekeeping - fire alarm / exits, mobile phones, loos, first aid, information desk, timekeeping, tea / coffee breaks, lunch, finish
- Salford CVS staff in **purple t-shirts** - here to help!
- Twitter hashtag for the conference **#RadicalRootsSalford**
- Wi-Fi – ‘FreeBee’ no password
- Photography / filming / visual minutes
- Information packs – agenda, workshop info, delegate list, biographies, timeline template, VCSE Strategy progress report, Health & Social Care MoU, *10% Better* campaign pledge, Skill Givers leaflet, WCML leaflet, Evaluation forms, Equal Opportunities monitoring forms
- Fantastic speakers and workshops – so hope you leave feeling engaged, provoked and inspired
- MASSIVE thanks to everyone who has helped – keynote speakers, workshop presenters, Salford CVS staff team 😊
- VOTE Now! Mentimeter





# RADICAL ROOTS TO PRACTICAL ACTION

**Radical** - a person who advocates thorough or complete political or social change

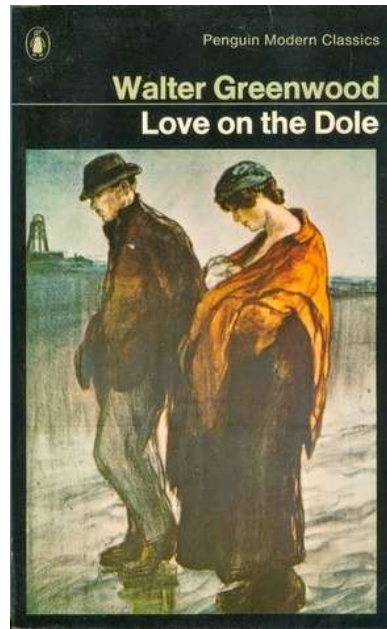
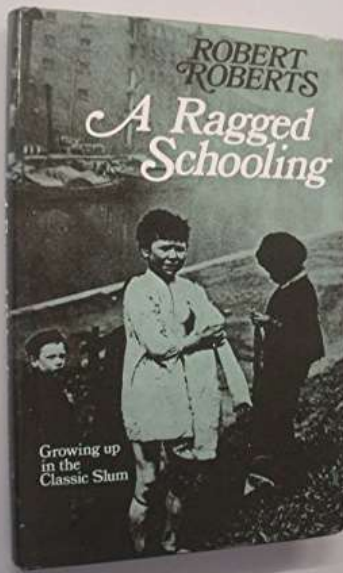
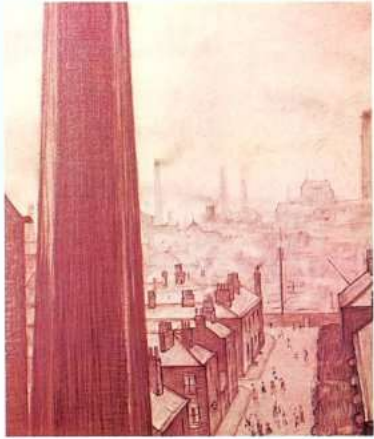
**Roots** - the basic cause, source, or origin of something

**Practical** - concerned with the actual doing or use of something rather than with theory and ideas

**Action** - the process of doing something for a particular purpose

# The Classic Slum

Salford Life in the First Quarter of the Century  
Robert Roberts



# A TALE of TWO CITIES



A Century of Social Action

COME TO **GRASS ROOTS BOOKS** OPEN 10-6 MON-FRI 10-5.30 SAT

FOR A WIDE RANGE OF BOOKS ON FEMINISM, GENERAL, POLITICS, FICTION, AND MUCH MORE....

A WORKER'S CO-OPERATIVE at 1 newton street piccadilly, manchester







**Salford CVS**  
making a difference in Salford



# RADICAL ROOTS TO PRACTICAL ACTION

---

## NATIONAL VOICES

**Kathy Evans**  
**Chief Executive**  
**Children England**

**Children  
England**  
Charities working for  
children and families



**Salford CVS**  
making a difference in Salford

# RADICAL ROOTS TO PRACTICAL ACTION

---

## NATIONAL VOICES

**Nathan Yeowell**  
**Head of Policy &**  
**Partnerships**  
**NPC**





# **RADICAL ROOTS TO PRACTICAL ACTION**

Nathan Yeowell, Head of Policy & External Affairs, NPC

---

Salford CVS, May 2019

NPC



# ABOUT ME

- Background in local government, politics and campaigning
- Experience of working with charities and CVS bodies to rethink public service redesign
- Track record of dressing up like a fool for local charity...







**RAC2** The Really Amazing Charity  
reach/Shop: 64078







# THE POWER OF PLACE



 **BLOGS**

**Are we failing to focus on disadvantaged places?**



 **RESOURCES**

**To tackle the country's divisions, we must start locally**



 **BLOGS**

**What is changed by collaboration in a place?**

## HOW WILL CONSERVATIVES DELIVER GREAT PLACES?

**HALL 8A, ICC (SECURE ZONE), BIRMINGHAM**

Sunday 30/09/18, 15.45 to 17.00

**Chair:** **Katy Balls**, Political Correspondent, The Spectator

**Speakers:**

**Andy Street**, West Midlands Metro Mayor  
**Nathan Yeowell**, Head of Policy and External Affairs at New Philanthropy Capital  
**Ruth Davison**, Executive Director of Public Impact, National Housing Federation

**Tim Bowles**, West of England Metro Mayor  
**Neil McInroy**, Chief Executive at Centre for Local Economic Strategies



Sponsors:

**NATIONAL HOUSING FEDERATION**

**NPC**  
New Philanthropy Capital

**CLES**  
Centre for Local Economic Strategies

## HOW CAN LABOUR MAKE GREAT PLACES?

**NATIONAL HOUSING FEDERATION, CENTRE FOR LOCAL ECONOMIC STRATEGIES, NEW PHILANTHROPY CAPITAL**

Tuesday 25/09/18, 17.30 – 19.00  
 Tate Liverpool, Auditorium

**Chair:** **Neil McInroy**, CLES

**Speakers:** **Jim McMahon MP**, Shadow HCLG Minister  
**Andy Burnham**, Metro Mayor of Greater Manchester

**Dan Corry**, New Philanthropy Capital  
**Angela Lockwood**, Chief Executive, North Star Housing Group



Sponsors:

**NATIONAL HOUSING FEDERATION**

**NPC**  
New Philanthropy Capital

**CLES**  
Centre for Local Economic Strategies





**Salford CVS**  
making a difference in Salford

# RADICAL ROOTS TO PRACTICAL ACTION

---

## NATIONAL VOICES

**Peter Holbrook**  
**Chief Executive**  
**Social Enterprise UK**





# Radical Roots to Practical Action

Peter Holbrook, CEO of Social Enterprise UK









# I used to be a revolutionary!

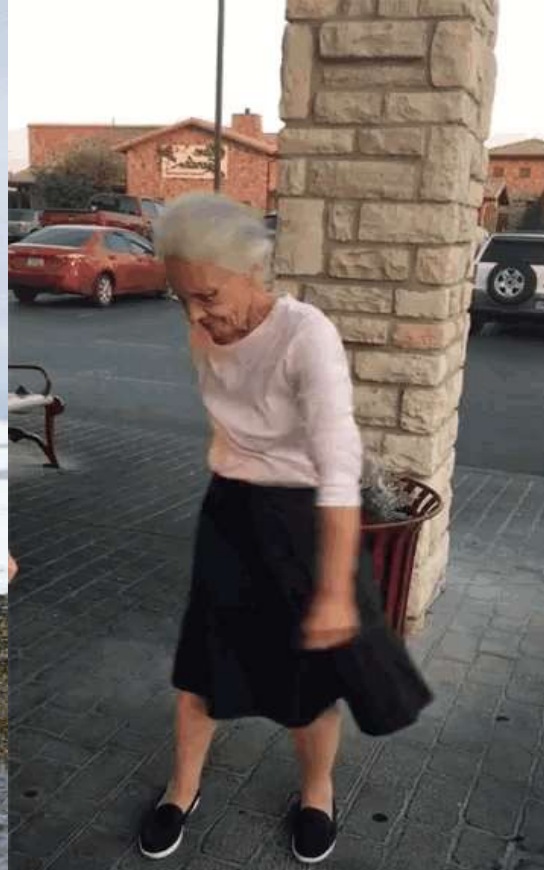




A century of 'rights' victories.....









# Something went wrong ?





**1 in 4**

children in the UK



live below the

**POVERTY**

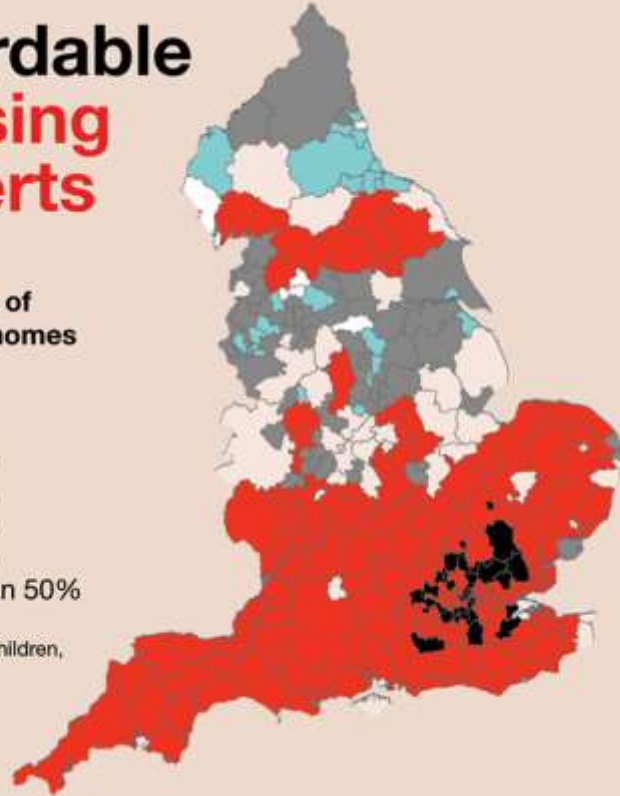
line

# Affordable housing deserts

Percentage of affordable homes

- Zero
- 0-10%
- 10-20%
- 20-30%
- 30-40%
- 40-50%
- More than 50%

Homes for our Children,  
Shelter 2015



## MANCHESTER



Average price  
**£164,428**  
Average salary  
**£27,716**

## LIVERPOOL



Average price  
**£145,334**  
Average salary  
**£26,208**



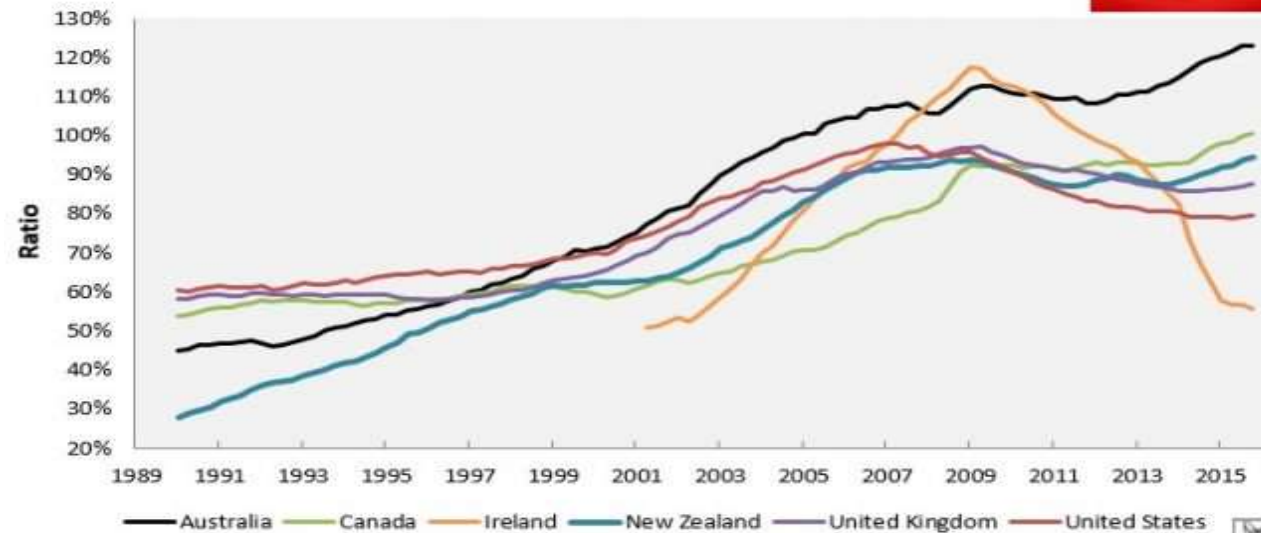
Social  
Enterprise UK



## Household Debt to GDP: Anglosphere

Source: Bank for International Settlements

MACRO  
BUSINESS



www.macrobusiness.com.au



Don't get bitten by  
loan sharks

Your benefits are changing and the way you receive your benefits will also soon be changing. Borrowing over a small amount of money from a loan shark could mean paying back thousands in interest. So don't get bitten by loan sharks...

If you'd like to speak to someone about this, call our helpline on 0800 323 33 11

Visit [chcymru.org.uk](http://chcymru.org.uk) for more information

[AdnysGallus](https://twitter.com/AdnysGallus)

Changing



Social  
Enterprise UK



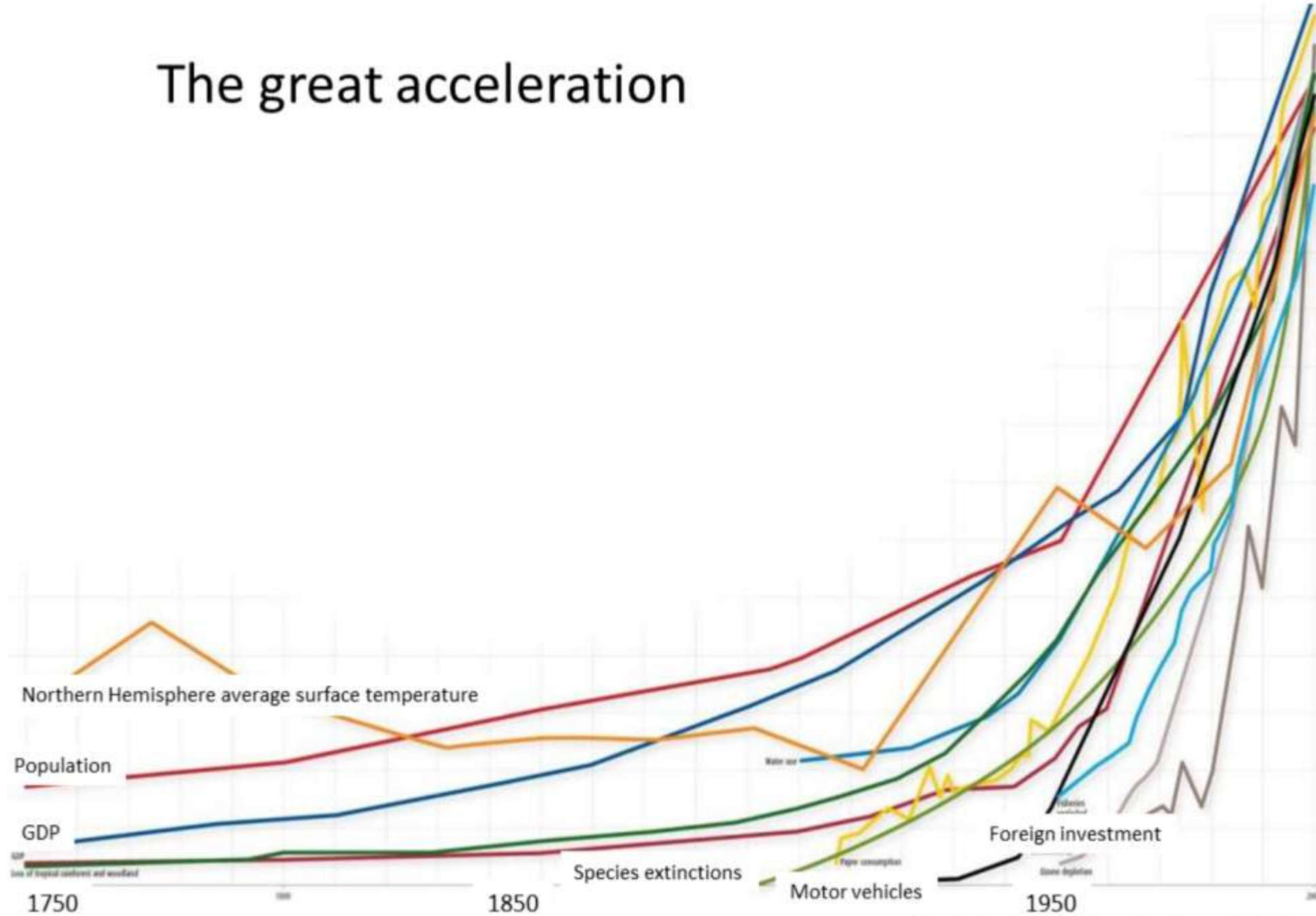








# The great acceleration



New Scientist 2008 from Steffen et al 2004

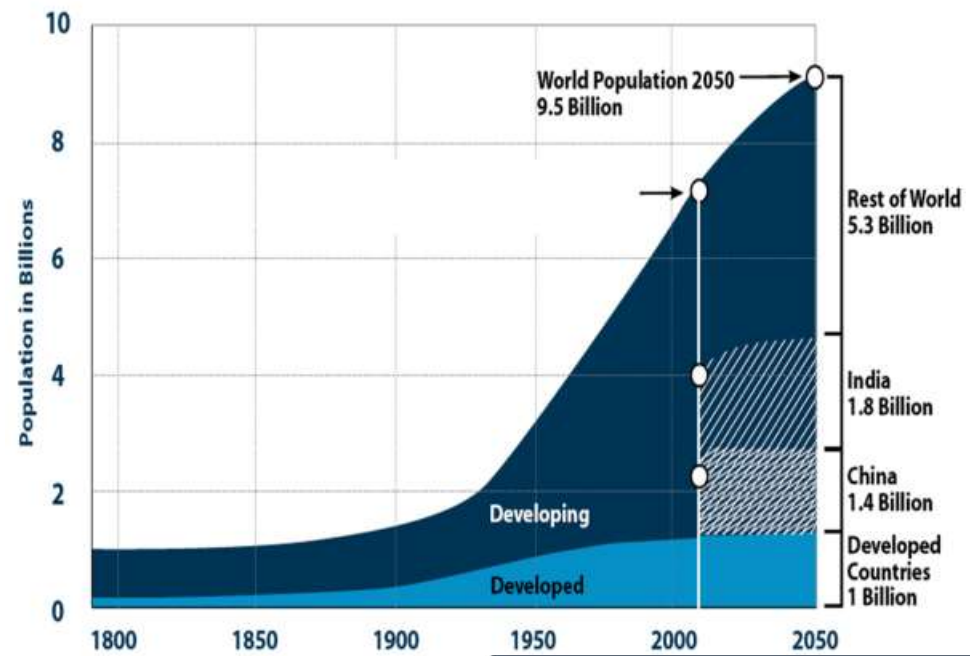
# TRICKLE DOWN ECONOMICS



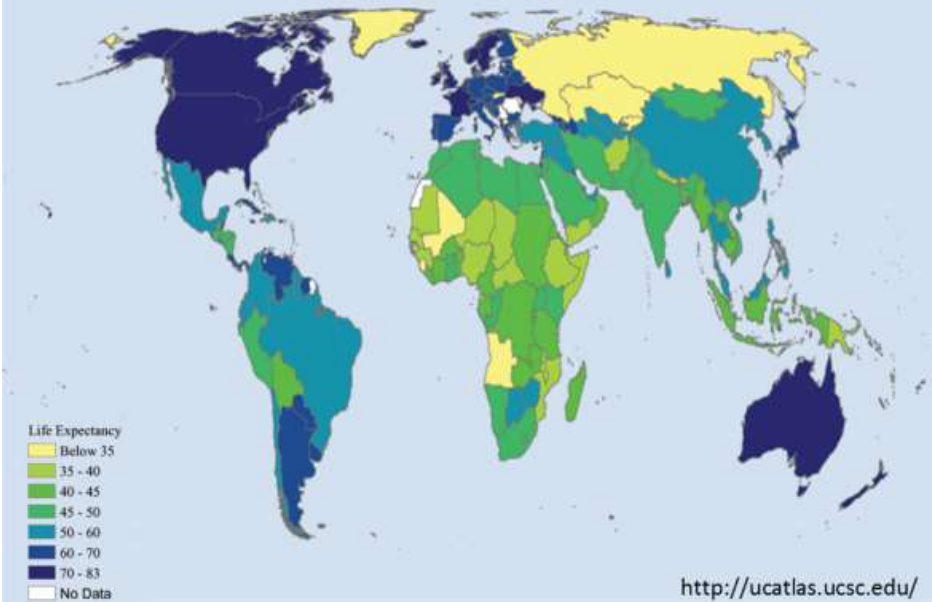
@bran\_dj



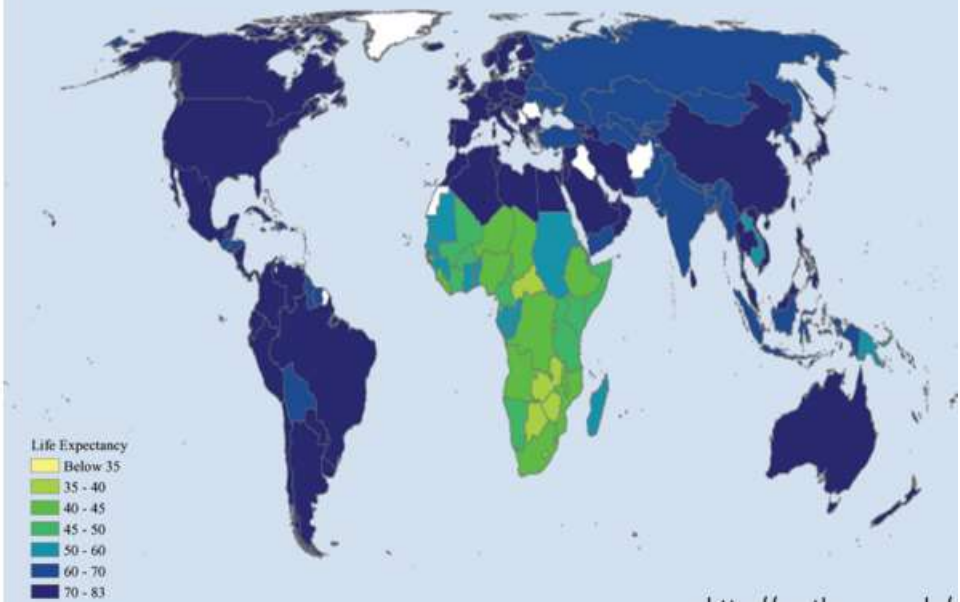
# Population trends



Life Expectancy at Birth 1962



Life Expectancy at Birth 2004











© Greenpeace / Alex Hofford







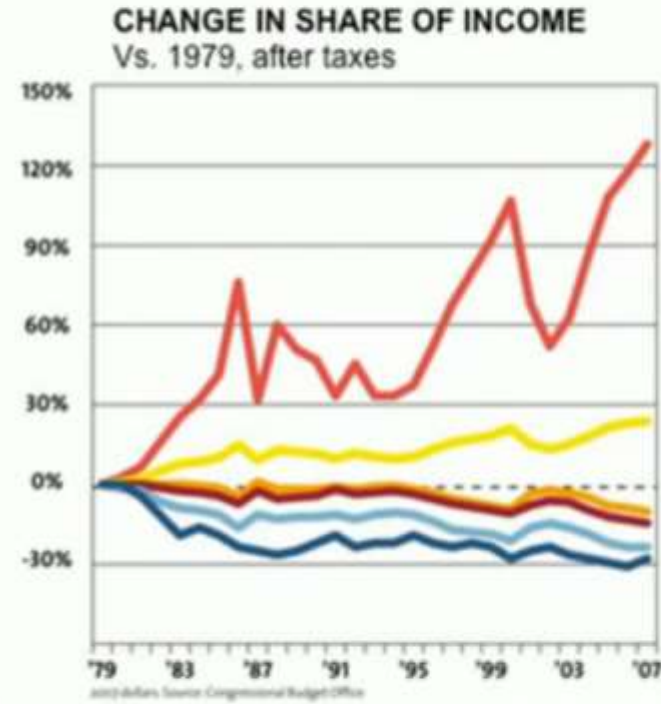
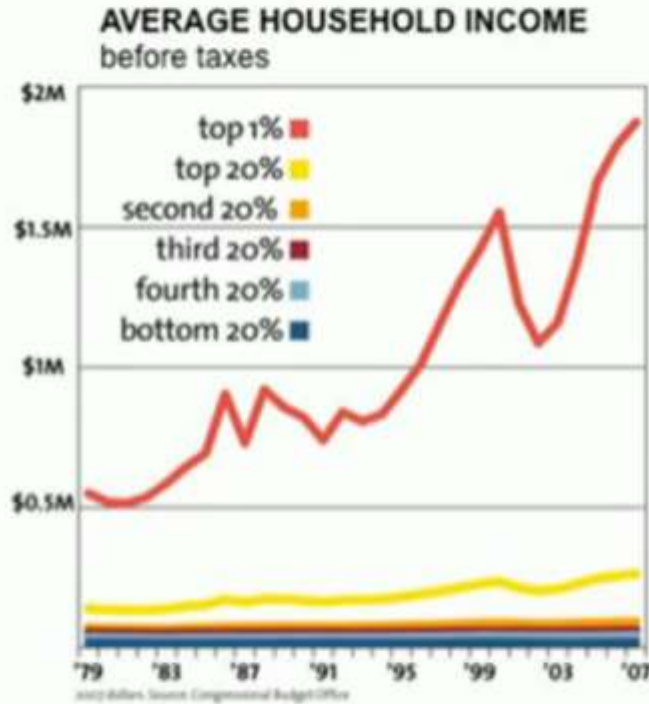


# THE WORLD'S WEALTH INEQUALITY



**SUPER  
TAX**

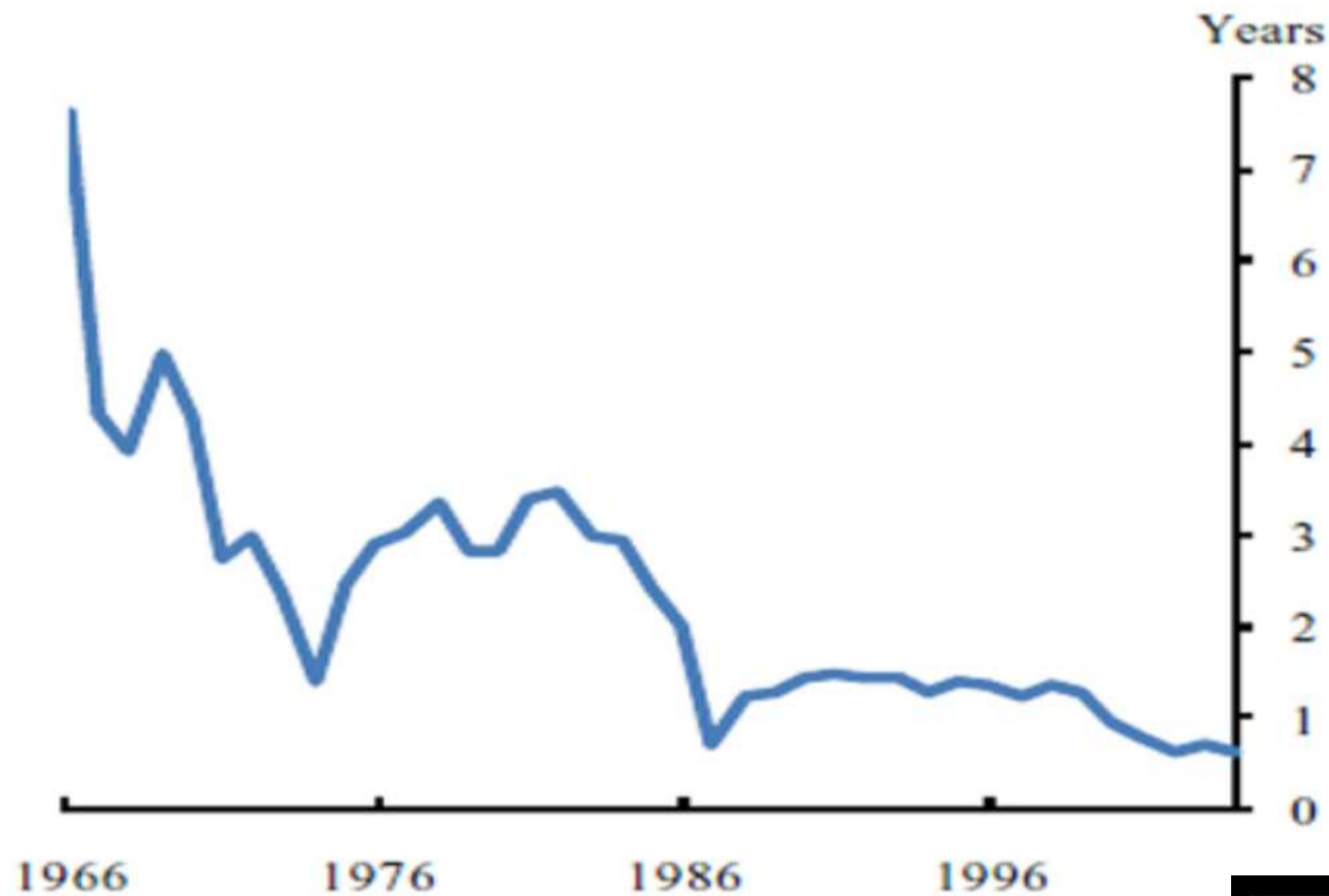
## The superrich have grabbed the bulk of the past three decades' gains.



Social  
Enterprise UK



## FTSE average holding period, 1966-2005



Source: London Stock Exchange



Social  
Enterprise UK



optimism









# GLOBAL OF FESTIVAL ACTION



KATOWICE, DEZEMBER 2018

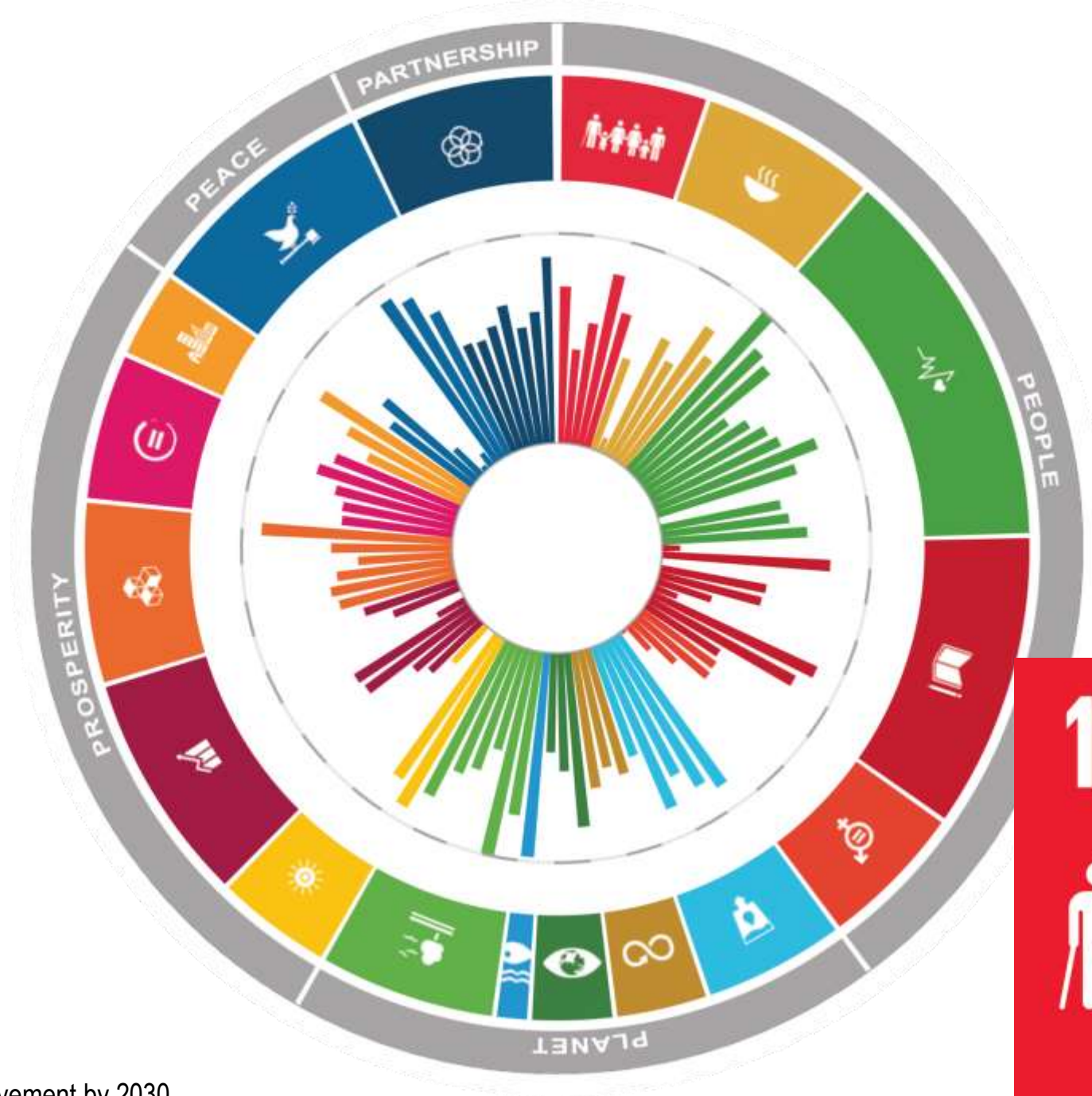


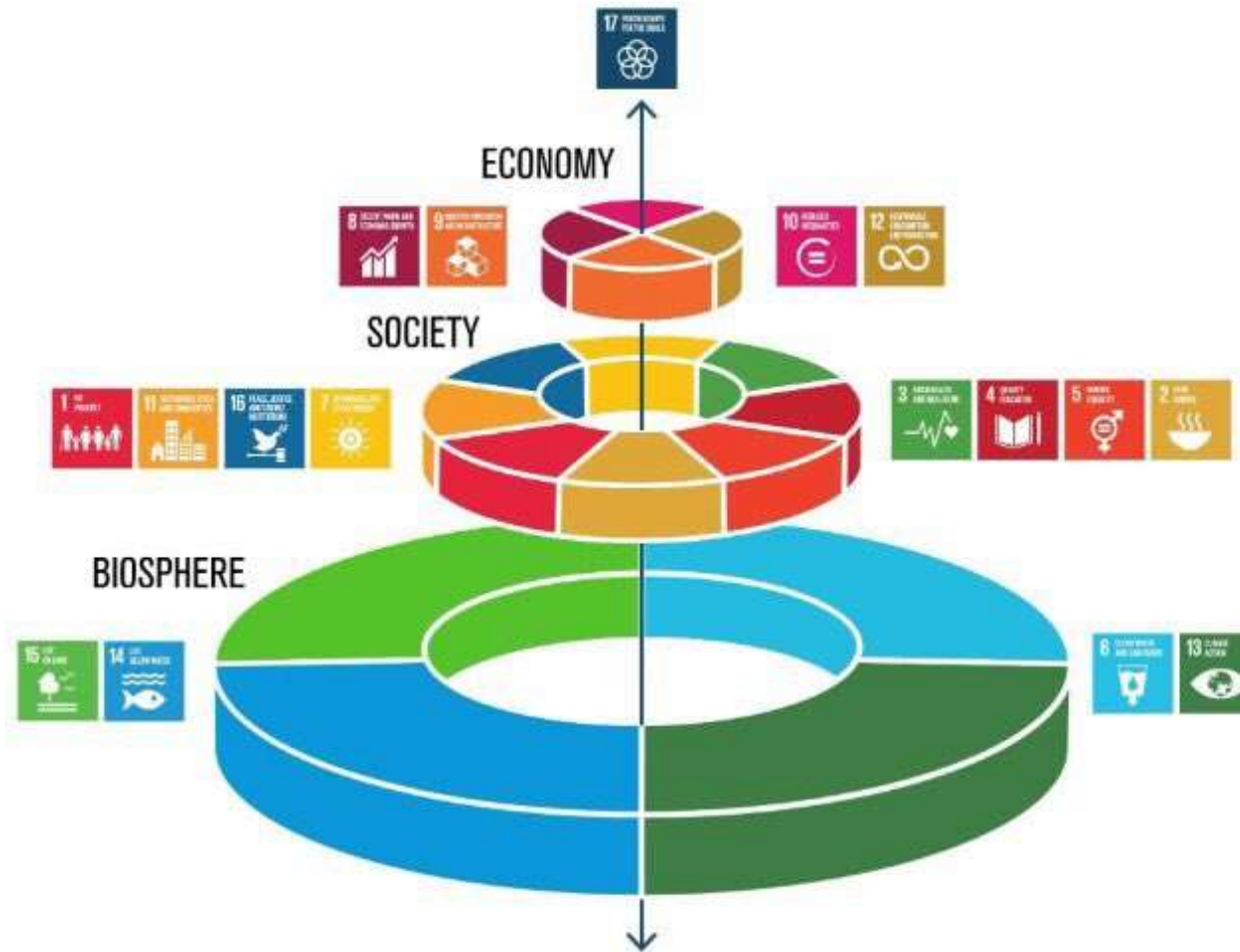


## Goals

-  Poverty
-  Food
-  Health
-  Education
-  Gender Equality
-  Water
-  Energy
-  Economy
-  Infrastructure
-  Inequality
-  Cities
-  Sustainable Production
-  Climate
-  Oceans
-  Biodiversity
-  Institutions
-  Implementation

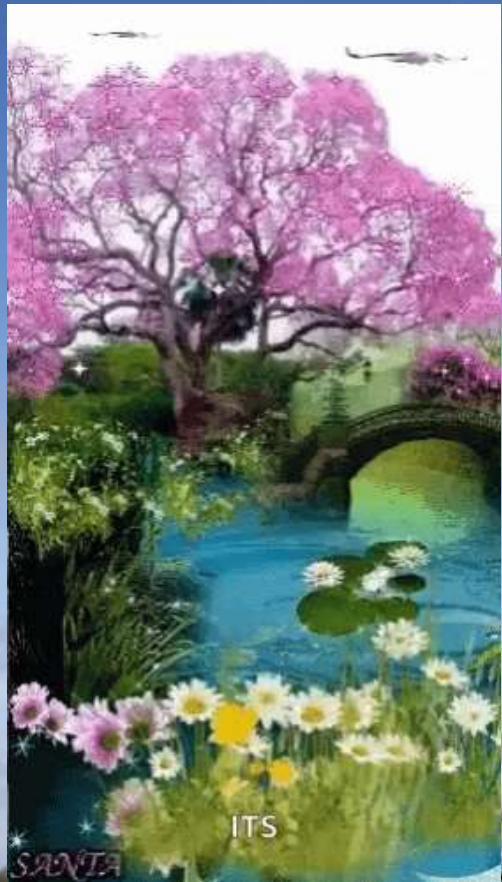
— Desirable levels of achievement by 2030





Designed by Emma Leach for Social Enterprise UK

















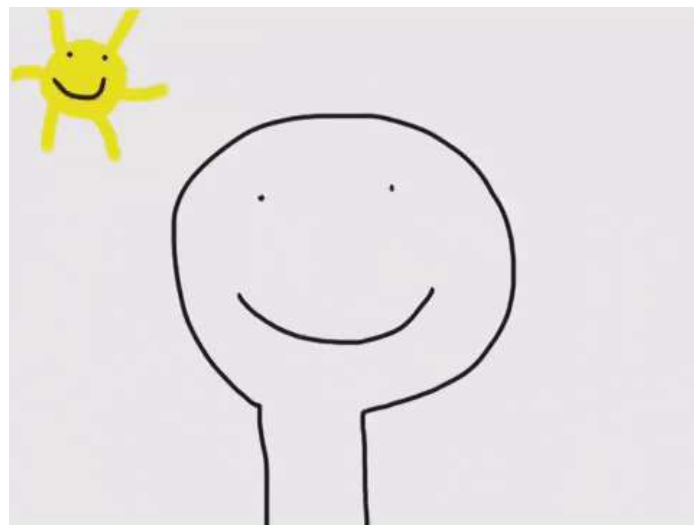








MORE  
LOVE









**#LOVEWINS**





# Social Enterprise UK



A home for the best universities, housing associations, cooperatives, mutual and community interest companies who are committed to doing better business  
#futureofbusiness



# Thanks

[www.socialenterprise.org.uk](http://www.socialenterprise.org.uk)

Twitter: @SocEnt\_UK  
@peteholbrook



**Salford CVS**  
making a difference in Salford

# RADICAL ROOTS TO PRACTICAL ACTION

---

# Q&A

Chaired by Alison Page







**Salford CVS**  
making a difference in Salford



# ADD YOUR ROOTS TO THE TIMELINE



**#RadicalRootsSalford**



Salford **CVS**  
making a difference in Salford

Tea  
break

# RADICAL ROOTS TO PRACTICAL ACTION



#RadicalRootsSalford





Salford **CVS**  
making a difference in Salford

SAYING GOODBYE!

EXEC BOXES 2&3

SOCIAL PRESCRIBING

BARTON LOUNGE

**SALFORD'S RADICAL ROOTS**

WILLOWS SUITE

TICK TOCK

PRESS LOUNGE



# Workshops

#RadicalRootsSalford



**Salford CVS**  
making a difference in Salford

**ADD YOUR RADICAL ROOTS**

**DATE FOUNDED:**

**ORGANISATION NAME:**

**YOUR LOGO:**

**RADICAL ROOTS TO PRACTICAL ACTION**

# ADD YOUR ROOTS TO THE TIMELINE



**#RadicalRootsSalford**





Salford **CVS**  
making a difference in Salford

# RADICAL ROOTS TO PRACTICAL ACTION

# Lunch





**Salford CVS**  
making a difference in Salford


# RADICAL ROOTS TO PRACTICAL ACTION

LOCAL VOICES

**Duncan Craig**  
**Survivors Manchester**







**“To break the silence of the sexual abuse, rape and sexual exploitation of boys and men in order to empower those affected to defeat the legacy of abuse to move towards positive futures”**

## Radical Roots...



## Practical Action

Aged 11, I became friends with local park keeper who went on to sexually abuse me.

Years of silence followed until 2006 when training to be a psychotherapist and meeting a client who had been sexually abused.

Action needed to be taken and in 2009 with £250 from my bank, a “Websites for Dummies” book from Oxfam, and a PAYG Mobile phone, I opened Survivors Manchester





We are

10

Survivors Manchester is celebrating  
it's 10th birthday!

 @SurvivorsMcr

## In 10 Years we...

- Supported over 2,500 individuals
- Made a brew for over 100 drop in attendees
- Experienced an annual 30% increase in referrals
- Won 10 Awards, including Guardian Charity Trailblazer of the Year
- Developed 1<sup>st</sup> ever male ISVA service
- Opened services in 5 HMP estates
- Registered 132,990 of therapy hours since 2015
- Worked closely with Hollyoaks on John Paul rape storyline; Coronation Street on David Platt rape story; and Hollyoaks on Football Abuse story
- Trained over 500 Greater Manchester Police Officers
- BROKE THE SILENCE!



**Salford CVS**  
making a difference in Salford

# RADICAL ROOTS TO PRACTICAL ACTION

LOCAL VOICES

**Bernie Garner**  
**The FED**







- 
- **The Federation of Jewish Services is a Social Care charity established in 1867 to support the Manchester Jewish Community.**
  - **We are a communal not for profit organisation that delivers support to approx. 1000 adults and children each week.**
  - **Today, in the main, we still support Jewish people but a number of our services are also offered to people from the wider community.**
  - **A little bit about me .....**

- **Supported living**
- **Social work and Referral & Advice service**
- **Volunteering Day care for older people living in the community**
- **Residential, Nursing and Respite care**
- **Children's centre**
- **Community centre**







## **What makes The Fed so unique.....**

- **The people we support**
- **Our community who gives so much of their time back to help others**
- **The Fed staff who are our greatest resource**
- **Our Community Hub at Heathlands Village .... It is so much more than a care home . It's a place that connects the Jewish Community of Manchester.**



**Salford CVS**  
making a difference in Salford



# RADICAL ROOTS TO PRACTICAL ACTION

LOCAL VOICES

**Sarah Whitehead**  
**Community Pride**







Salford CVS  
making a difference in Salford



# RADICAL ROOTS TO PRACTICAL ACTION

LOCAL VOICES

**Kush Chottera**  
**Europia**



# Exploring professional opportunities

- Life of morals, values and virtues
- 100 years of Vedic life – student / family / society / god
- The advertising world
- Acceptance





# Choosing the third sector

- Homelessness – *kush kush.....the finest you can smoke*
- Addiction – handpicked for being myself
- LGBTQ – giving back
- ESOL – a challenge
- Europa – a dream



# Sustainability!

- Leadership – the boss!
- To Service – ego, humility and innovation
- ABCD – working WITH communities FOR communities
- Business acumen – cash flow dreams
- Working together – creating long-lasting partnerships





**Salford CVS**  
making a difference in Salford

# RADICAL ROOTS TO PRACTICAL ACTION

LOCAL VOICES

**Lynette Cawthra**  
**Working Class**  
**Movement Library**







WORKING CLASS  
MOVEMENT  
LIBRARY



# WCML

Working Class Movement Library





51 Crescent  
Salford M5 4WX

[www.wcml.org.uk](http://www.wcml.org.uk)

 [@wcmlibrary](https://twitter.com/wcmlibrary)

0161 736 3601

[info@wcml.org.uk](mailto:info@wcml.org.uk)





**Salford CVS**  
making a difference in Salford



# RADICAL ROOTS TO PRACTICAL ACTION

## LOCAL VOICES

**Lee Wakeham**  
**HMPasties**

**H.M.PASTIES**

Bring out the Good Inside



**Salford CVS**  
making a difference in Salford

# RADICAL ROOTS TO PRACTICAL ACTION

# Q&A

Chaired by Lesmond Taylor





Salford CVS  
making a difference in Salford

KEEPING CHILDREN AT HEART

PRESS LOUNGE

LEADING CHANGE

BARTON LOUNGE

DIGITAL BY DEFAULT

EXEC BOX 2&3

**WHAT'S THE**

ALTERNATIVE?

WILLOWS SUITE



# Workshops





**Salford CVS**  
making a difference in Salford

**ADD YOUR RADICAL ROOTS**

**DATE FOUNDED:**

**ORGANISATION NAME:**

**YOUR LOGO:**

**RADICAL ROOTS TO PRACTICAL ACTION**

# ADD YOUR ROOTS TO THE TIMELINE





Salford CVS  
making a difference in Salford

# RADICAL ROOTS TO PRACTICAL ACTION

# Tea break





**Salford CVS**  
making a difference in Salford

# SALFORD VCSE STRATEGY

**What's happening?  
Louise Murray  
Salford CVS**









**Salford CVS**  
making a difference in Salford

# VCSE EMERGENCY RESPONSE

**We need you!**  
**Michelle Warburton**  
**Salford CVS**





## DEFINITION OF AN EMERGENCY

The Civil Contingencies Act 2004 defines an emergency as:

*“An event or situation which threatens serious damage to human welfare in a place in the UK, the environment of a place in the UK, or war or terrorism which threatens serious damage to the security of the UK”*

**Salford City Council** is required to establish robust Civil Contingencies planning, response and recovery arrangements.





## WHY VCSE EMERGENCY RESPONSE

- The VCSE sector has an important role to play supporting statutory services in the planning, response and recovery phases of most emergency situations
- Lessons from previous emergencies demonstrated the need for a more co-ordinated approach – e.g. Boxing Day Floods, Arena, Grenfell

### **Salford VCSE sector's response to flooding, Dec 2015**

- The Broughton Trust, Helping Hands, Salford CVS and many others worked together with local people, volunteers, council and housing colleagues to try and help provide a co-ordinated response – but this was spontaneous and unplanned



## CREATING A CO-ORDINATED RESPONSE FOR SALFORD!

- VOCAL VCSE Leaders started working with our statutory partners in June 2018 on creating a co-ordinated VCSE response for Salford
- Salford CVS agreed to taking on a role of mobilising agreed VCSE organisations and trained volunteers in an emergency situation and also to manage spontaneous volunteers, if the need arises

### **We need you!**

- To formally sign up yourself and to act as an emergency or secondary responder to provide a range of practical support, welfare support, transport, communications, assisting with supplies and provision of rest centres



**Salford CVS**  
making a difference in Salford

# CHARITIES FOR A LIVING WAGE

**Get involved...  
Alison Page  
Salford CVS**







# CHARITIES FOR A LIVING WAGE

- Salford CVS is proud to have been an accredited Living Wage Employer since 2013
- This means we pay the Living Wage Foundation's annually calculated rate of pay to all of our staff, incl. any apprentices
- This 'real' Living Wage is based on the cost of living and is voluntarily paid by over 5,000 UK employers who believe a hard day's work deserves a fair day's pay!
- We're also an accredited Living Wage Friendly Funder, which means we promote the real Living Wage via our grants, and ask applicants to tell us if they pay that hourly rate (or above) - we report our findings to the LWF



# CHARITIES FOR A LIVING WAGE

- In 2018 the Living Wage Foundation published a report that called for action on low pay in the charity sector
- In response, at the annual Living Wage Week north-west event (held Nov 2018), Salford CVS agreed to join the Living Wage Foundation's campaign to encourage more charities to pay their staff the accredited Living Wage and pledged to practically work with charities in Salford
- We're now looking for charities who want our help to become accredited and will pay for the first 10 LWF accreditation fees
- Salford Credit Union are our first recruit... is anyone else interested?
- After all, I think we'd all agree that a hard day's work deserves a fair day's pay!



**Salford CVS**  
making a difference in Salford

# TACKLING POVERTY

**You can help...**  
**Sheila Murtagh**  
**Salford Credit Union**







# TACKLING POVERTY – YOU CAN HELP

In March 2019 VOCAL VCSE Leaders agreed to work together to tackle poverty in the following ways:

1. To produce a five-year plan for how the sector works together strategically and practically
2. To build into the action plan the following key areas of activity:
  - Promoting financial literacy in schools
  - Addressing banking issues for homeless people
  - Prioritising the provision of school uniforms for families in poverty
  - Tackling prescription poverty, where people cannot afford to get their medication due to the cost of prescriptions



## TACKLING POVERTY – YOU CAN HELP

3. Our ask of YOU today is to see if you can help with the following:
- Take part in the Salford Red Box Scheme to help tackle period poverty. We want you to buy a red box, collect items, then drop them off to the CAB at Langworthy Cornerstone
  - Raise funds to pay for the cost of transporting items and also to help buy new underwear
  - Join the Credit Union's payroll saving scheme (and persuade your employer to enrol if they haven't already)
  - Find pro bono warehouse storage space for Salford Food Share Network
  - Fundraise so an electric van can be purchased (*help tackle poverty and climate change at the same time!*)



**Salford CVS**  
making a difference in Salford

# VOTE NOW!

**Democracy  
in action...**







**Salford CVS**  
making a difference in Salford

# CLOSING REMARKS

**Alison Page**  
**Salford CVS**

